

R101

NEW



POLYAMIDE MONOLITHIC WHEEL WITH ROUND STEEL SWIVEL SUPPORT AND SMOOTH THROUGH HOLE

Materials:

Wheel body (1):

Polyamide. Resistant to oils and greases.

Tread (2):

Polyamide. Resistant to oils and greases.

Surface finish:

Smooth.

Colour:

(1-2) Natural white.

(3-4-5-6) Galvanised blue.

Wheel rotation (4):

The hole for the pivot pin is formed by plastic moulding. A galvanised steel tube is positioned between the stud and the hole for protection.

Bracket (3):

Steel fork (DD13).

Rotating assembly (5):

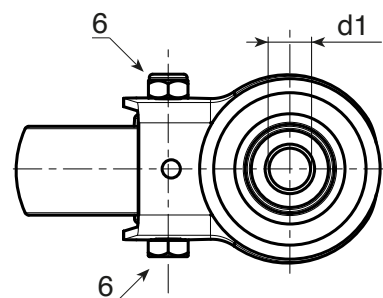
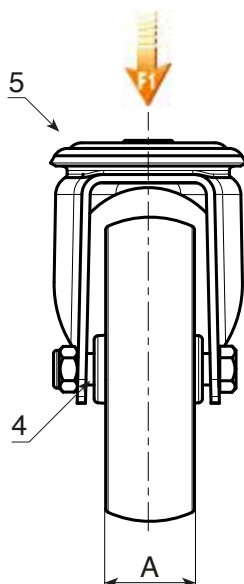
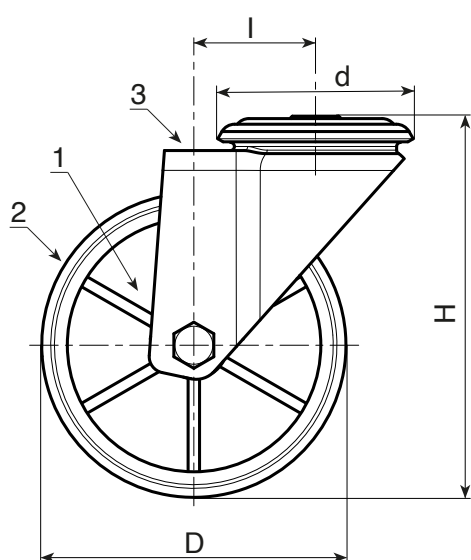
Steel rotating assembly with double ball race and smooth fixing hole, (hole tolerance H7).

Wheel fastening (6):

Steel hex head screw, coupled with a steel nut.

Special requests:

- Upon request and for a minimum of 20 pieces, the wheel can be supplied with a needle roller cage, (replace code no. R101 with code no. R131).



	art.	D	A	H	I	d	d1H7	g	F1 (Kg)
●	R101080.T30D12	80	30	108	32	64	12	360	100
●	R101100.T30D12	100	30	127	32	64	12	400	130
●	R101125.T39D12	125	39	155	32	64	12	726	130
●	R101150.T40D12	150	40	184	35	65	12	-	140
●	R101175.T45D16	175	45	228	48	95	16	-	270
●	R101200.T50D16	200	50	240	48	95	16	1970	270

R101CIN NEW



POLYAMIDE MONOLITHIC WHEEL WITH ROUND STAINLESS STEEL SWIVEL SUPPORT AND SMOOTH THROUGH HOLE

INOX

Materials:

Wheel body (1):

Polyamide. Resistant to oils and greases.

Tread (2):

Polyamide. Resistant to oils and greases.

Surface finish:

Smooth.

Colour:

(1-2) Natural white.

(3-4-5-6) Natural stainless steel.

Wheel rotation (4):

The hole for the pivot pin is formed by plastic moulding. A stainless steel (Aisi 304) tube is positioned between the stud and the hole for protection.

Bracket (3):

Stainless steel (Aisi 304) fork.

Rotating assembly (5):

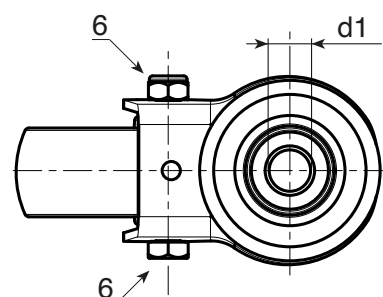
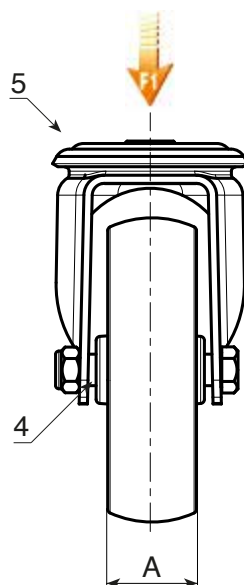
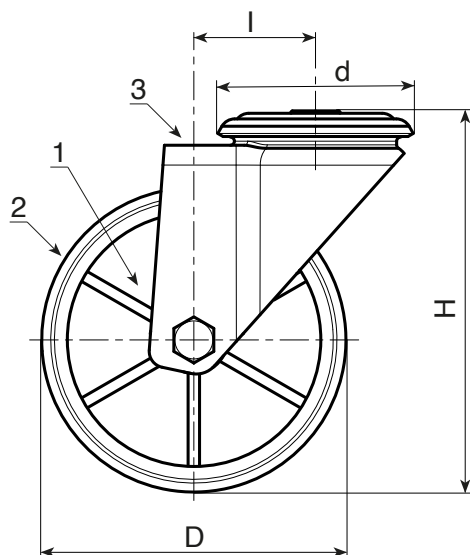
Stainless steel (Aisi 304) rotating assembly with double stainless steel (Aisi 420) ball race and smooth fixing hole, (hole tolerance H7).

Wheel fastening (6):

Stainless steel (Aisi 304) hex head bolt, coupled with a stainless steel (Aisi 304) nut.

Special requests:

- Upon request and for a minimum of 20 pieces, the wheel can be supplied with a needle roller cage, (replace code no. R101CIN with code no. R131CIN).



INOX

	art.	D	A	H	I	d	d1H7	g	F1 (Kg)
●	R101080.T30D12CIN	80	30	108	32	64	12	340	100
●	R101100.T30D12CIN	100	30	127	32	64	12	522	130
●	R101125.T39D12	125	39	155	32	64	12	513	130
●	R101150.T40D12CIN	150	40	184	35	65	12	-	140
●	R101175.T45D16CIN	175	45	228	48	95	16	-	300
●	R101200.T50D16CIN	200	50	240	48	95	16	-	300