

R107

NEW



POLYAMIDE MONOLITHIC WHEEL WITH RECTANGULAR SWIVEL STEEL PLATE

Materials:

Wheel body (1):

Polyamide. Resistant to oils and greases.

Tread (2):

Polyamide. Resistant to oils and greases.

Surface finish:

Smooth.

Colour:

(1-2) Natural white.

(3-4-5-6) Galvanised blue.

Wheel rotation (4):

The hole for the pivot pin is formed by plastic moulding. A galvanised steel tube is positioned between the stud and the hole for protection.

Bracket (3):

Steel fork (DD13).

Rotating assembly (5):

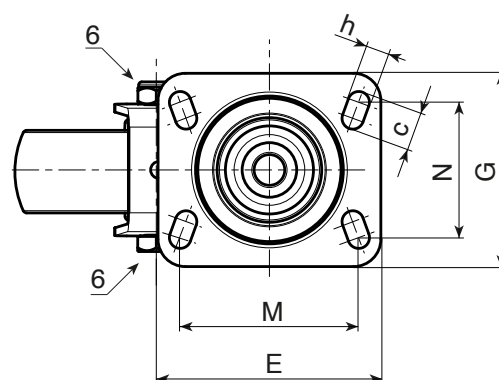
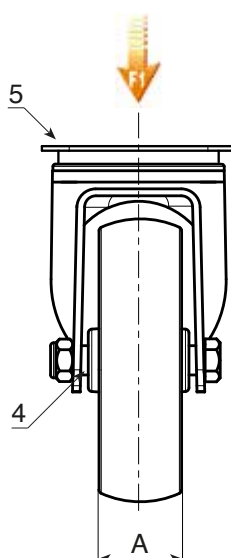
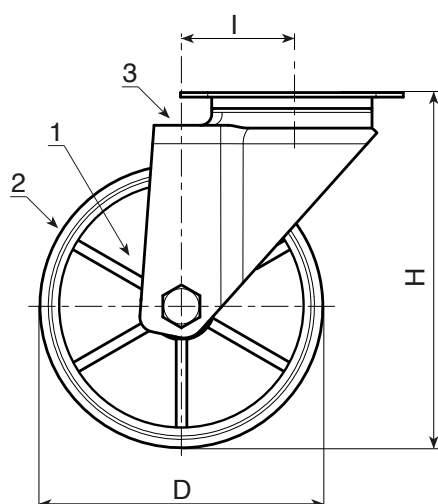
Steel rotating assembly with double ball race, and rectangular swivel plate with four slotted mounting holes.

Wheel fastening (6):

Steel hex head screw, coupled with a steel nut.

Special requests:

- Upon request and for a minimum of 20 pieces, the wheel can be supplied with a needle roller cage, (replace code no. R107 with code no. R137).



	art.	D	A	H	I	E	G	M	N	c	h	g	F1 (Kg)
●	R107080.T30P080X060	80	30	108	32	95	80	80	60	12	9	427	100
●	R107100.T30P080X060	100	30	127	32	95	80	80	60	12	9	468	130
●	R107125.T39P080X060	125	39	155	32	95	80	80	60	12	9	617	130
●	R107150.T40P080X060	150	40	184	35	95	100	80	60	12	9	-	140
●	R107175.T45P105X080	175	45	228	48	129	106	105	80	23	11	1866	270
●	R107200.T50P105X080	200	50	240	48	129	106	105	80	23	11	2105	270

R107CIN NEW



POLYAMIDE MONOLITHIC WHEEL WITH RECTANGULAR STAINLESS STEEL SWIVEL PLATE

INOX

Materials:

Wheel body (1):

Polyamide. Resistant to oils and greases.

Tread (2):

Polyamide. Resistant to oils and greases.

Surface finish:

Smooth.

Colour:

(1-2) Natural white.

(3-4-5-6) Galvanised blue.

Wheel rotation (4):

The hole for the pivot pin is formed by plastic moulding. A galvanised steel tube is positioned between the stud and the hole for protection.

Bracket (3):

Stainless steel (Aisi 304) fork.

Rotating assembly (5):

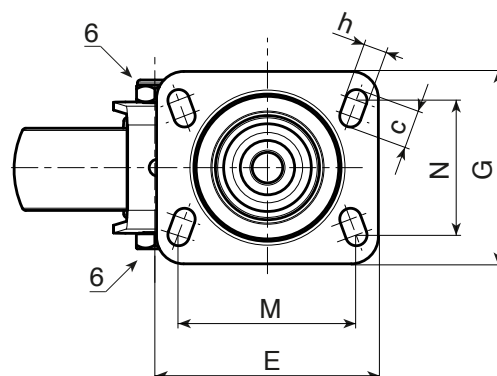
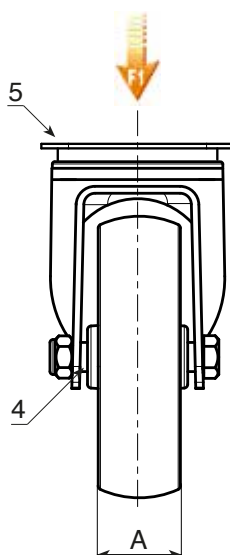
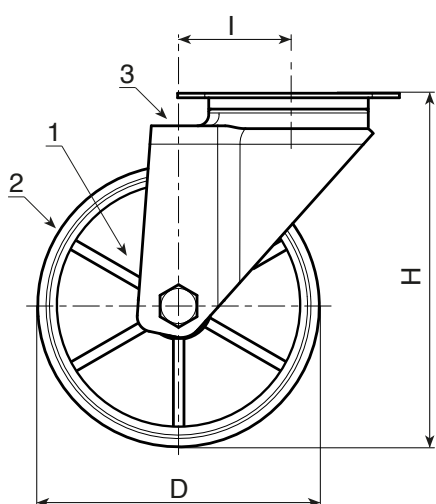
Stainless steel rotating assembly (Aisi 304) with double stainless steel (Aisi 420) ball race, and rectangular swivel plate with four slotted mounting holes.

Wheel fastening (6):

Stainless steel (Aisi 304) hex head bolt, coupled with a stainless steel (Aisi 304) nut.

Special requests:

- Upon request and for a minimum of 20 pieces, the wheel can be supplied with a needle roller cage, (replace code no. R107CIN with code no. R137CIN).



INOX

	art.	D	A	H	I	E	G	M	N	c	h	g	F1 (Kg)
●	R107080.T30P080X060CIN	80	30	108	32	95	80	80	60	12	9	410	100
●	R107100.T30P080X060CIN	100	30	127	32	95	80	80	60	12	9	450	130
●	R107125.T39P080X060CIN	125	39	155	32	95	80	80	60	12	9	888	130
●	R107150.T40P080X060CIN	150	40	184	35	95	100	80	60	12	9	-	140
●	R107175.T45P105X080CIN	175	45	228	48	129	106	105	80	23	11	1854	300
●	R107200.T50P105X080CIN	200	50	240	48	129	106	105	80	23	11	2046	300