

# R150

NEW



## POLYAMIDE MONOLITHIC WHEEL WITH BALL BEARING WITHOUT RIG (HEAVY DUTY)

**Materials:**

**Wheel body:**

Polyamide. Resistant to oils and greases.

**Tread:**

Polyamide. Resistant to oils and greases.

**Surface finish:**

Smooth.

**Colour:**

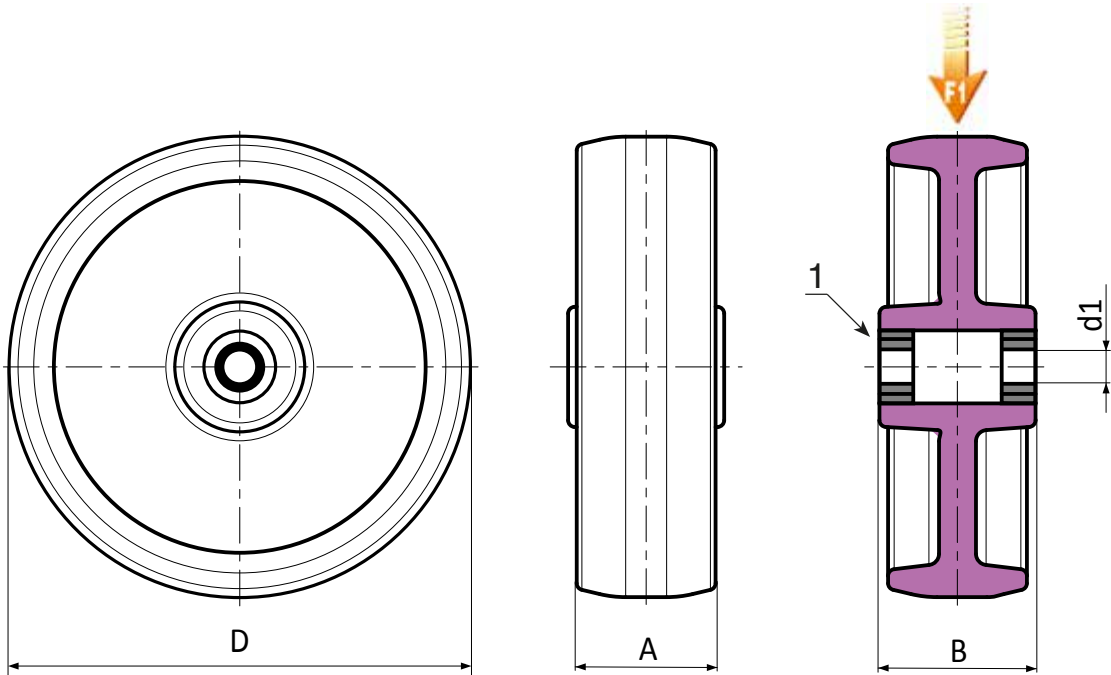
Natural white.

**Wheel rotation:**

(1) A pair of steel ball bearings is inserted in the wheel hub to provide excellent rollability under a heavy load.

**Special requests:**

- Upon request and for a minimum of 20 pieces, the wheel can be supplied with a needle roller cage, (replace code no. R150 with code no. R140).



	art.	D	A	B	d1	g	F1 (Kg)
●	R150100.T35D15	100	35	40	15	-	370
●	R150125.T35D15	125	35	40	15	-	380
●	R150125.T45D20	125	45	58	20	-	600
●	R150150.T40D20	150	40	49	20	-	380
●	R150150.T45D20	150	45	58	20	-	700
●	R150200.T50D20	200	50	58	20	-	800