

## FIXED MALE CONNECTOR

### MATERIAL:

- (2-3) Duroplast.  
Oils and greases resistant.  
High temperatures resistant.

### SURFACE:

Glossy.

### COLOUR:

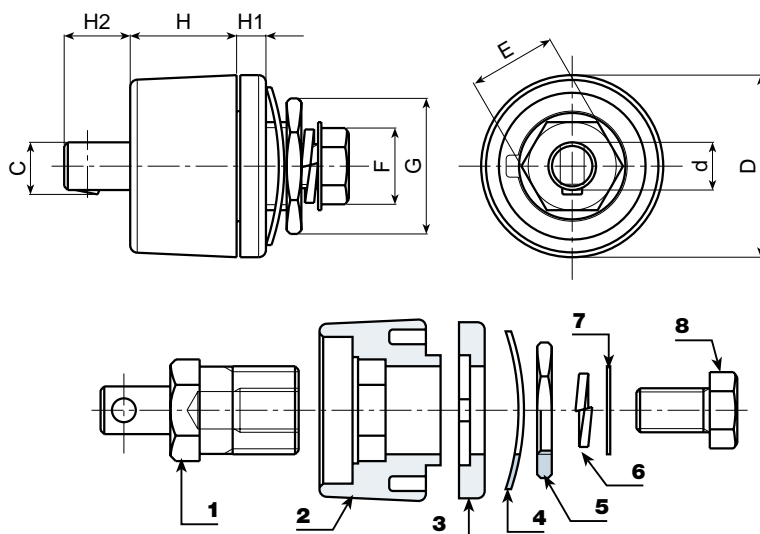
Black (RAL 9011).

### MAIN INSERTS:

- (1) Threaded Insert with male element in brass.  
(4) F25-00 Toothed washer in black-oxide treated steel DIN 6798.  
F35-50 Corrugated washer in black-oxide treated steel DIN 137.  
F70-95 Corrugated washer in black-oxide treated steel DIN 137.  
(5) Threaded hexagonal ring in yellow passivated steel.  
(6) Split washer in black-oxide treated steel UNI 1751.  
(7) Yellow passivated steel washer.  
(8) Hexagonal head screw in yellow passivated steel DIN 933/UNI 5739.

### SPECIAL REQUESTS:

- None.



S111 + S112



S113 + S114



S112 + S113



| Art.        | D    | H  | H1 | H2 | d  | c   | E  | F  | G  | Weight (gr) |
|-------------|------|----|----|----|----|-----|----|----|----|-------------|
| S114-F25-00 | 33   | 14 | 4  | 7  | 9  | 9,5 | 14 | 13 | 22 | 60          |
| S114-F35-50 | 50,5 | 29 | 7  | 9  | 13 | 14  | 21 | 17 | 27 | 194         |
| S114-F70-95 | 50,5 | 29 | 7  | 9  | 13 | 14  | 24 | 19 | 32 | 242         |

