

# KNURLED METAL HANDWHEEL WITH THREADED STUD

## W464-W464CIN



C40  
AISI 303

UL94  
HB



### Material:

**W464:** Steel with resistance class 5.8.

**W464 CIN:** Stainless steel AISI 303.

### Surface:

Low roughness turned surface.

### Colour:

**W464:** Nickel-plated (galvanic treatment).

**W464 CIN:** Natural.

### Alternative Colour for W464:

Black-oxide (final code letter B ex.: W46429.SM08X..B).

Zinc-plated (final code letter Z ex.: W46429.SM08X..Z).

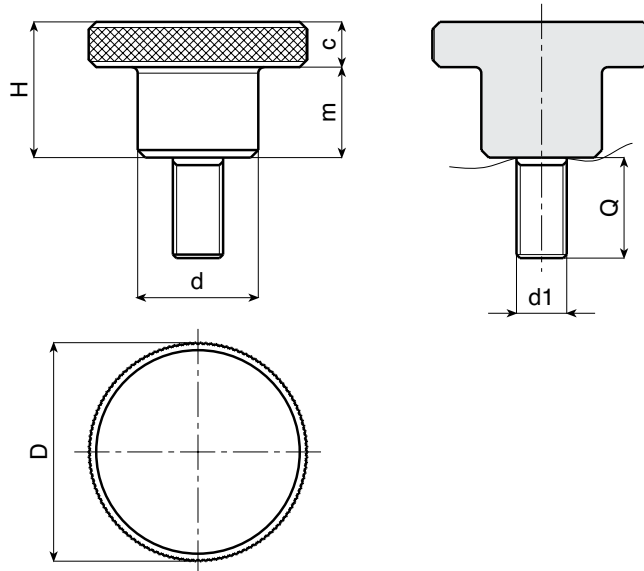
### Stud:

Turned threaded stud with tolerance class 6g.



### SPECIAL REQUESTS:

- It's possible to supply the stud with different lengths, on request and for quantities.



### Version W464 on nickel-plated steel

Art.	d	D	H	m	c	Q MAX	d1 6g	Q	g
<b>W46411.SM03X..H</b>	6	11	8	5	3	16	M03	10	4
<b>W46415.SM04X..H</b>	8	15	10	6	4	20	M04	10-16	7,8-8,2
<b>W46419.SM05X..H</b>	10	19	12	8	4	20	M05	10-16-20	15-15,6-16
<b>W46423.SM06X..H</b>	12	23	15	10	5	30	M06	16-20-30	27,5-28,2-29,8
<b>W46429.SM08X..H</b>	16	29	18	12	6	40	M08	16-20-30-40	55-56-59-62
<b>W46435.SM10X..H</b>	20	35	23	15	8	40	M10	20-30-40	107-112-117

### Version W464 CIN on stainless steel

**INOX**

Art.	d	D	H	m	c	Q MAX	d1 6g	Q	g
<b>W46411.IM03X10CIN</b>	6	11	8	5	3	16	M03	10	4
<b>W46415.IM04X16CIN</b>	8	15	10	6	4	20	M04	16	8,2
<b>W46419.IM05X20CIN</b>	10	19	12	8	4	20	M05	20	16
<b>W46423.IM06X30CIN</b>	12	23	15	10	5	30	M06	30	30
<b>W46429.IM08X30CIN</b>	16	29	18	12	6	40	M08	30	59
<b>W46435.IM10X30CIN</b>	20	35	23	15	8	40	M10	40	117

Presumable presence in the stock in %

(🏠) 90% (😊) 40% (😐) 5% (😞)

BOTECO® - © All right reserved - [www.boteco.it](http://www.boteco.it)

Any unauthorized reproduction is strictly forbidden



**W  
METAL SERIES**