

# W467



C40

Aisi 303



## KNURLED METAL HANDWHEEL WITH SHORT HUB AND THREADED HOLE

### Materials:

#### W467:

Steel with strength class 5.8.

#### W467 PIN:

Stainless steel (Aisi 303).

### Surface finish:

Turned with low roughness.

### Colour:

#### W467:

Nickel plated (galvanic treatment).

#### W467 PIN:

Natural.

### Alternative finishes:

#### Black-oxide treatment:

(replace the final letter of the code (H) with letter B (W46729.SM08B).

#### Galvanising:

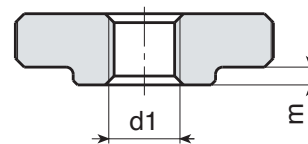
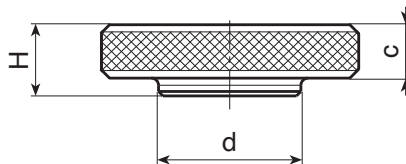
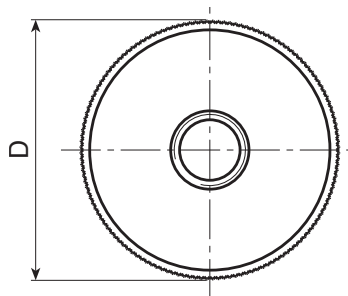
(replace the final letter of the code (H) with letter Z (W46729.SM08Z).

### Hole:

Threaded through hole machined from solid metal (thread tolerance 6H).

### Special requests:

- Upon request and for special quantities inserts can be supplied to customer's drawing with hole diameter d1.



### Version W467 - nickel-plated steel

Art.	d	D	H	m	c	d1 <sub>6H</sub>	g
W46711.SM03H	6	11	3	-	3	M3	2
W46715.SM04H	8	15	4	-	4	M4	5
W46719.SM05H	10	19	5	1	4	M5	9
W46723.SM06H	12	23	6	1	5	M6	16
W46729.SM08H	16	29	8	2	6	M8	32
W46735.SM10H	20	35	10	2	8	M10	61
W46739.SM12H	22	39	12	2	10	M12	92

### Version W467 PIN - stainless steel (Aisi 303)

INOX

Art.	d	D	H	m	c	d1 <sub>6H</sub>	g
W46711.IM03PIN	6	11	3	-	3	M3	2
W46715.IM04PIN	8	15	4	-	4	M4	5
W46719.IM05PIN	10	19	5	1	4	M5	9
W46723.IM06PIN	12	23	6	1	5	M6	16
W46729.IM08PIN	16	29	8	2	6	M8	32
W46735.IM10PIN	20	35	10	2	8	M10	61
W46739.IM12PIN	22	39	12	2	10	M12	92