

# FIXED METAL LEVER WITH HORIZONTAL ARM

## W501-W503



### Material:

Steel with resistance class 5.8.

### Surface:

Low roughness turned surface.

### Colour:

Nickel-plated ( galvanic treatment).

### Alternative Colour:

Black-oxide (final code letter B ex.: W501070.SM0801**B**).

Zinc-plated (final code letter Z ex.: W501070.SM0801**Z**).

### Handgrip:

Short knobs art. I500, reinforced polyamide, black Ral 9011 ( see page I-11).

### Handgrip Fastening:

Push-fit. Removable.

### Foro:

W501: female threaded blind hole with tolerance class 6H.

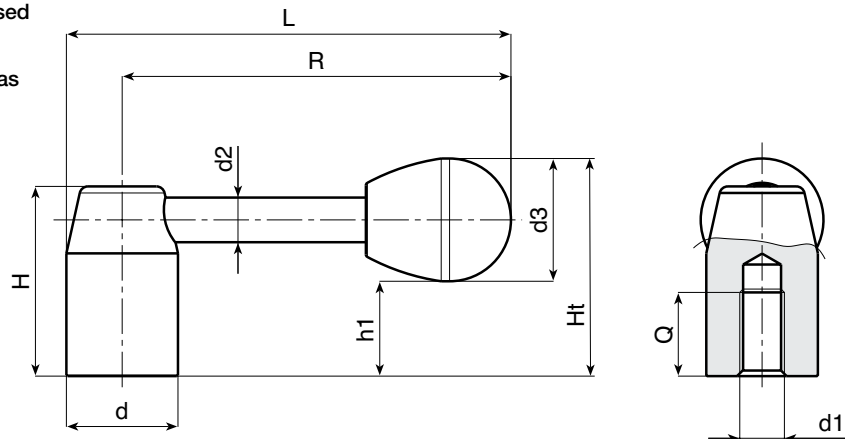
W503: female smooth blind hole with tolerance class H11.

For fixing system, or execution of keyway or square holes, please refer to the technical notes attached to the catalogue.



### SPECIAL REQUESTS:

- It's possible to supply the levers with customised hole d1, on request and for quantities.
- It's possible to supply the knobs with colours as shown in the table at page W-19.



#### Version W501 with blind threaded bore with 6H tolerance

Art.	d	R	L	H	Ht	h1	d2	d3	d1 6H	Q	g
W501070.SM0801H	20	70	80	34	39	17	8	22	M08	15	89
W501080.SM1001H	22	80	91	38	43	21	8	22	M10	15	111
W501095.SM1201H	24	95	107	42	49	21	10	28	M12	18	160
W501110.SM1201H	28	110	124	48	54	26	12	28	M12	18	280
W501125.SM1601H	32	125	141	52	59	27	12	32	M16	22	340
W501140.SM1601H	36	140	158	58	64	32	14	32	M16	23	513
W501150.SM2001H	40	150	170	64	71	34	16	37	M20	25	687
W501170.SM2001H	45	170	192,5	70	77	40	16	37	M20	28	890

#### Version W503 with blind smooth bore with H11 tolerance

Art.	d	R	L	H	Ht	h1	d2	d3	d1 H11	Q	g
W503070.SD0801H	20	70	80	34	39	17	8	22	08	16	84
W503080.SD1001H	22	80	91	38	43	21	8	22	10	18	109
W503095.SD1201H	24	95	107	42	49	21	10	28	12	20	158
W503110.SD1201H	28	110	124	48	54	26	12	28	12	22	278
W503125.SD1601H	32	125	141	52	59	27	12	32	16	25	337
W503140.SD1601H	36	140	158	58	64	32	14	32	16	26	500
W503150.SD2001H	40	150	170	64	71	34	16	37	20	28	670
W503170.SD2001H	45	170	192,5	70	77	40	16	37	20	30	870

Presumable presence in the stock in %

(☺) 90% (☹) 40% (☹) 5% (☹) 5%

BOTECO® - © All right reserved - www.boteco.it

Any unauthorized reproduction is strictly forbidden



W  
METAL SERIES