

W804 - W805

W804CIN - W805CIN

KNOB STYLE STEEL INDEXING PLUNGER WITHOUT RING NUT WITH OR WITHOUT LOCK NUT



W804 Version: Knob-style black oxide treated indexing plunger without ring nut

	Art.	D	H	h	d2	d	d1	Q	⚖ g	Wrench
😊	W804.Q0501	22	45	22	M10x1	12	5	5	16	W807.05
😊	W804.Q0601	27	54	26	M12x1,5	14	6	6	28	W807.06
😊	W804.Q0801	33	68	34	M16x1,5	19	8	8	64	W807.08
😞	W804.Q1001	33	79	43	M20x1,5	19	10	10	113	W807.10

W805 Version: Knob-style black oxide treated indexing plunger without ring nut with lock nut

	Art.	D	H	h	d2	d	e2	s2	d1	Q	⚖ g	Wrench
😊	W805.Q0501	22	45	22	M10x1	12	17	6	5	5	23	W807.05
😊	W805.Q0601	27	54	26	M12x1,5	14	19	7	6	6	38	W807.06
😊	W805.Q0801	33	68	34	M16x1,5	19	24	8	8	8	82	W807.08
😞	W805.Q1001	33	79	43	M20x1,5	19	30	9	10	10	133	W807.10

W804 CIN Version: Knob style black-oxide treated indexing plunger without ring nut with lock nut

INDEX

	Art.	D	H	h	d2	d	d1	Q	⚖ g	Wrench
😞	W804.I0501CIN	22	45	22	M10x1	12	5	5	16	W807.05
😞	W804.I0601CIN	27	54	26	M12x1,5	14	6	6	28	W807.06
😞	W804.I0801CIN	33	68	34	M16x1,5	19	8	8	64	W807.08
😞	W804.I1001CIN	33	79	43	M20x1,5	19	10	10	113	W807.10

W805 CIN Version: Knob-style stainless steel indexing plunger without ring nut with lock nut

INDEX

	Art.	D	H	h	d2	d	e2	s2	d1	Q	⚖ g	Wrench
😞	W805.I0501CIN	22	45	22	M10x1	12	17	6	5	5	23	W807.05
😞	W805.I0601CIN	27	54	26	M12x1,5	14	19	7	6	6	38	W807.06
😞	W805.I0801CIN	33	68	34	M16x1,5	19	24	8	8	8	82	W807.08
😞	W805.I1001CIN	33	79	43	M20x1,5	19	30	9	10	10	133	W807.10

**W - S
PLUNGERS**

ver. W-SUK.01-0613

**BOTECO
METAL LINE**

W-S - 10

Presumable presence in the stock in %

(🏭) 90% (😊) 40% (😞) 5% (😞)

www.boteco.it - © All right reserved - BOTECO®

Any unauthorized reproduction is strictly forbidden

W804 - W805



Material:

4) Reinforced polyamide scallop knob. Cannot be removed.

Inserts:

Versions W804 and W805

- (3) Zinc plated steel spring.
- (2) Threaded steel body with wrench slot.
- (1) Hardened high resistance steel plunger pin.
- (5) Threaded steel lock nut (UNI 5589).

Versions W804 CIN and W805 CIN

- (3) Stainless steel spring.
- (2) Threaded stainless steel body with wrench slot.
- (1) Stainless steel plunger pin (AISI 303).
- (5) Threaded stainless steel lock nut (UNI 5589) (AISI 303).

The knob-style indexing plunger can be screwed into place by hand. On request, to facilitate assembly, a special zinc plated locking wrench be supplied.

ATTENTION: The manufacturer recommends making the lodging hole for the plunger pin with tolerance H7.

Surfaces:

(4) Black satin finish (RAL 9011).

Versions W804 and W805

(1.2.5) Black-oxide finish.

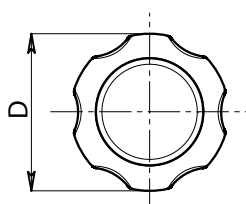
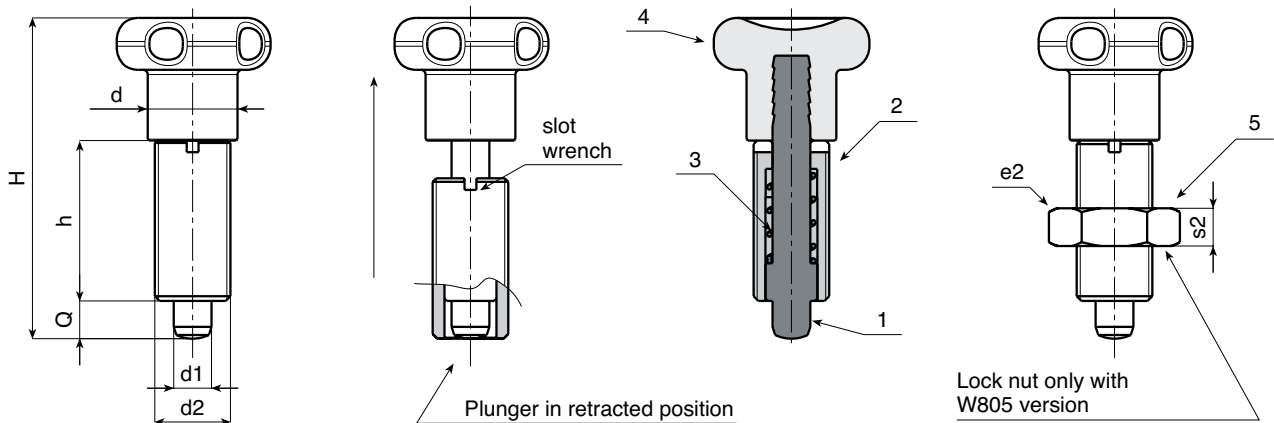
Versions W804 CIN and W805 CIN

(1.2.5) Natural.

Packs containing 10 pieces.

SPECIAL REQUESTS:

- On request and for special quantities the knob is available in a choice of colours as indicated in the table on page 31.
- On request a locking wrench can be supplied.



Presumable presence in the stock in %

(☺) 90% (☹) 40% (⊖) 5% (⊕)

BOTECO® - © All right reserved - www.boteco.it

Any unauthorized reproduction is strictly forbidden

