

# Y719



C40

AISI 303



## STEEL ANGLED BALL JOINT WITH SAFETY CATCH - DIN 71802 - CS DESIGN

### Materials:

#### Y719:

Steel with strength class 5.8.

#### Y719CIN:

Stainless steel (Aisi 303).

### Surface finish:

Turned with low roughness.

### Colour:

#### Y719:

Standard blue galvanising.

#### Y719CIN:

Natural.

### Inserts:

(2) Ball insert with milled seat for wrench and threaded stud machined from solid material (thread tolerance 6g).

Y719: steel - Y719CIN: stainless steel (Aisi 303).

(3) Harmonic steel spring ring.

(4) Nut with threaded hole (DIN 934).

Y719: steel - Y719CIN: stainless steel (Aisi 304).

(5) Safety catch to retain the ball with a shaped spring. (Y719: harmonic steel) (Y719CIN: natural stainless steel).

(1) Ball joint with threaded hole and hole for safety spring.

Y719: steel - Y719CIN: stainless steel (Aisi 303).

### Standard version:

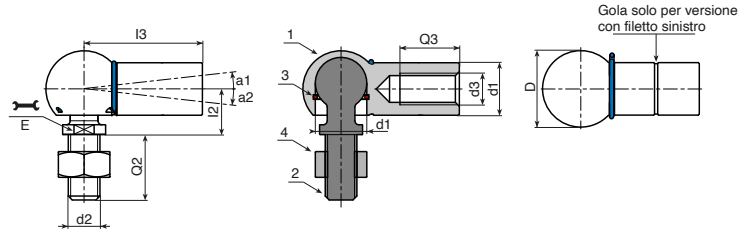
Right-hand thread (thread tolerance 6H).

### Version SX (LH):

Left-hand thread (thread tolerance 6H). Identifiable by the groove on the joint.

### Special requests:

- None.



### Version 719 - joint with standard thread

Art.	d2 <sub>6g</sub>	d3 <sub>6H</sub>	D	E	l2	l3	Q2	d1 <sub>h9-H9</sub>	Q3	a1	a2	g
Y71908.VZM05	M5	M5	12,8	7	9	22	10,2	8	10,2	18	10	15
Y71910.VZM06	M6	M6	14,8	8	11	25	11,5	10	11,5	18	15	25
Y71913.VZM08	M8	M8	19,3	11	13	30	14	13	14	18	15	53
Y71916.VZM10	M10	M10	24	13	16	35	15,5	16	15,5	18	15	104
Y71919.VZM14X1.5	M14X1,5	M14X1,5	30	16	20	45	21,5	19	21,5	18	15	221

### Version 719 - joint with LH thread

Art.	d2 <sub>6g</sub>	d3 <sub>6H</sub>	D	E	l2	l3	Q2	d1 <sub>h9-H9</sub>	Q3	a1	a2	g
Y71908.VZM05SX	M5	M5 SX	12,8	7	9	22	10,2	8	10,2	18	10	15
Y71910.VZM06SX	M6	M6 SX	14,8	8	11	25	11,5	10	11,5	18	15	25
Y71913.VZM08SX	M8	M8 SX	19,3	11	13	30	14	13	14	18	15	53
Y71916.VZM10SX	M10	M10 SX	24	13	16	35	15,5	16	15,5	18	15	104
Y71919.VZM14X1.5SX	M14X1,5	M14X1,5 SX	30	16	20	45	21,5	19	21,5	18	15	221

### Version 719CIN - joint with standard thread - STAINLESS STEEL

INOX

Art.	d2 <sub>6g</sub>	d3 <sub>6H</sub>	D	E	l2	l3	Q2	d1 <sub>h9-H9</sub>	Q3	a1	a2	g
Y71908.INM05CIN	M5	M5	12,8	7	9	22	10,2	8	10,2	18	10	15
Y71910.INM06CIN	M6	M6	14,8	8	11	25	11,5	10	11,5	18	15	25
Y71913.INM08CIN	M8	M8	19,3	11	13	30	14	13	14	18	15	53
Y71916.INM10CIN	M10	M10	24	13	16	35	15,5	16	15,5	18	15	104
Y71919.INM14X1.5CIN	M14X1,5	M14X1,5	30	16	20	45	21,5	19	21,5	18	15	221

### Version 719CIN - joint with LH thread - STAINLESS STEEL

INOX

Art.	d2 <sub>6g</sub>	d3 <sub>6H</sub>	D	E	l2	l3	Q2	d1 <sub>h9-H9</sub>	Q3	a1	a2	g
Y71908.INM05XCIN	M5	M5 SX	12,8	7	9	22	10,2	8	10,2	18	10	15
Y71910.INM06XCIN	M6	M6 SX	14,8	8	11	25	11,5	10	11,5	18	15	25
Y71913.INM08XCIN	M8	M8 SX	19,3	11	13	30	14	13	14	18	15	53
Y71916.INM10XCIN	M10	M10 SX	24	13	16	35	15,5	16	15,5	18	15	104
Y71919.INM14X1.5XCIN	M14X1,5	M14X1,5 SX	30	16	20	45	21,5	19	21,5	18	15	221