

1-034SL Captive Fastener 9.5 SNAP-LINE

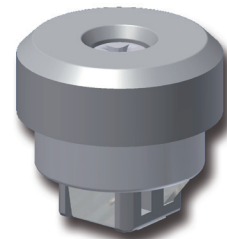
for cutout $\square 9.5$, meets machinery directive 2006/42EC, tool-less installation, self-adjusting, spring supported clamping range of 0.5-5.5mm



The Captive Fastener offers the advantages of an ordinary captive screw combined with simpler, less costly installation.

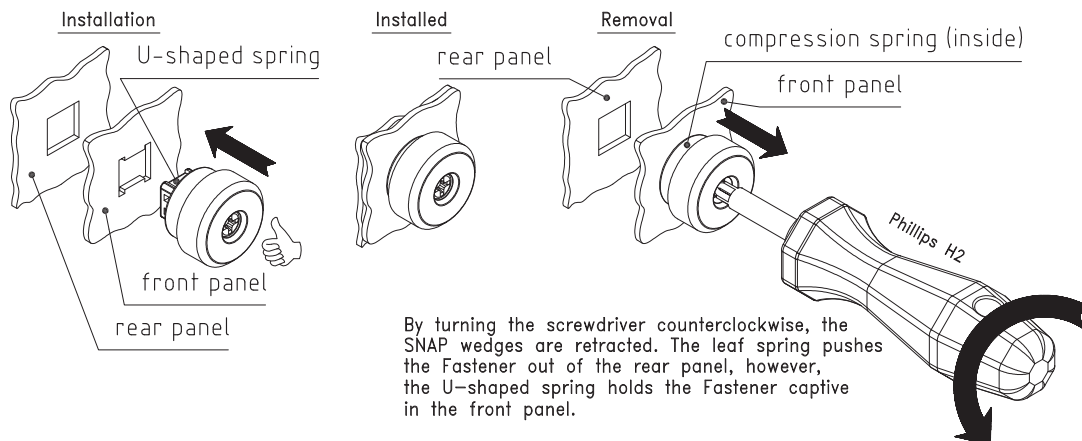
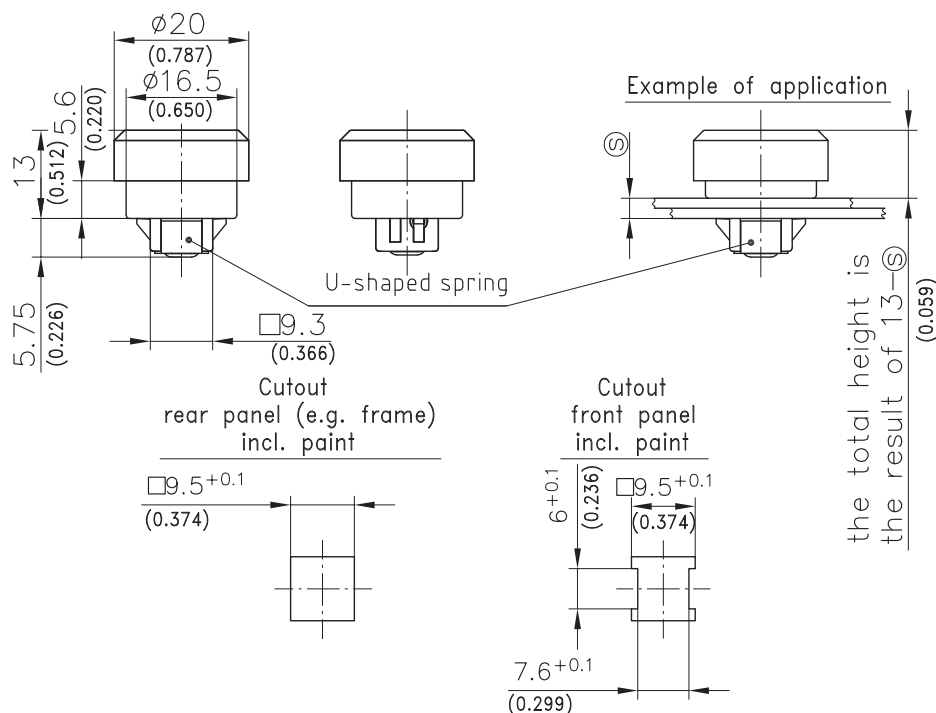
- The Captive Fastener meets machinery directive 2006/42EC, stating that safety relevant components may only be operated with tools.
- The Captive Fastener is held securely in the panel even under extreme vibration environments.
- A 1/4 turn of the insert will cause the Captive Fastener to pop out of the panel cutout.
- By use of an internal spring, the Captive Fastener is self-adjusting to any application thickness between 0.5mm and 5.5mm (0.020-0.217).
- Connects panels and securely latches doors and covers.

- The Fastener is captive, to the front panel.
- The Captive Fastener eliminates the concern of loosening, dropping or misplacing hardware.
- In applications requiring multiple Fasteners, because they are captive, the Fasteners can easily be disengaged one after the other without concern of losing or dropping them.
- One piece, completely pre-assembled.
- Save up to 90% assembly time.
- The \textcircled{S} Dimension indicates the total thickness of the sheet metal panels.



Material:

- **Housing and washer:** zinc die, chrome plated
- **Insert:** Aluminium, hardened
- **Compression spring and U-shaped spring:** stainless steel
- **SNAP wedges:** sintered steel



By turning the screwdriver counterclockwise, the SNAP wedges are retracted. The leaf spring pushes the Fastener out of the rear panel, however, the U-shaped spring holds the Fastener captive in the front panel.

Captive Fastener	clamping range \textcircled{S}	Part No.
	0.5 - 5.5	294-9302.00-00055