



1-069SL Pull Latch Handle SNAP-LINE



19" technology, tool-less installation

Benefits:

- ▶ The pull latch handle is used by 19" engineering for locking insertions.
- ▶ The completely pre-assembled drawer latch handle is installed by a simple push into the appropriate cutout.
- ▶ RH and LH application.
- ▶ When inserting the plug-in unit the free running slam hook latches into the appropriate cutout and locks the plug-in unit with the frame.
- ▶ By tilting the handle, the hook is withdrawn from the cutout and the plug-in unit can be pulled out.
- ▶ **Attention: The bulge in the cutout is always opposite of the bolt. This cutout guarantees a unique and constant fitting.**

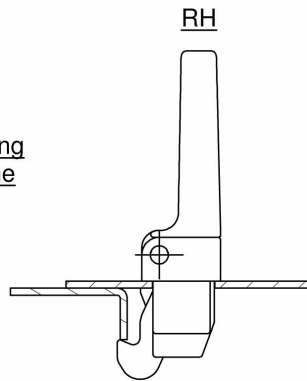
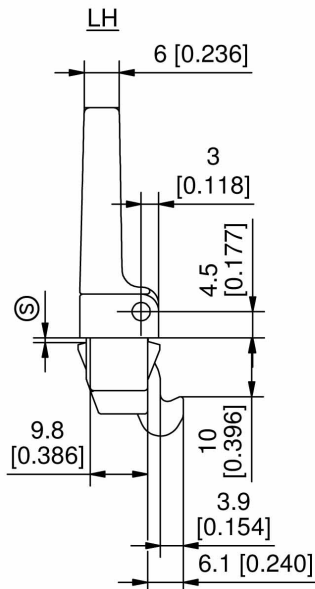
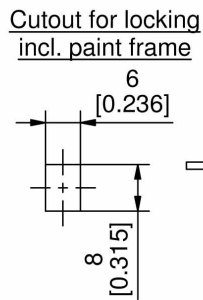
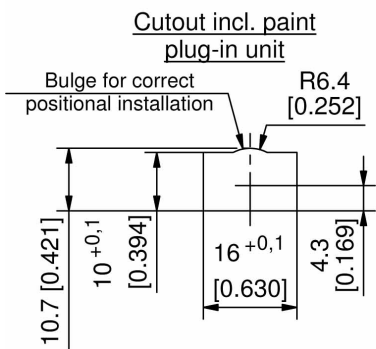
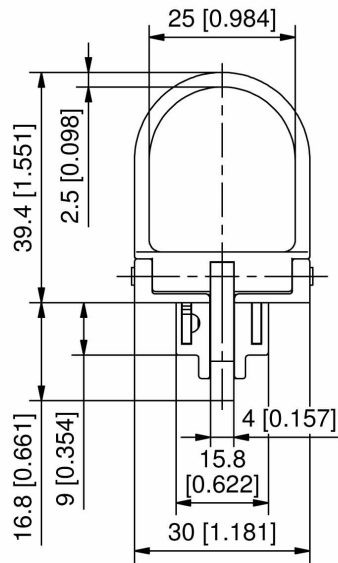
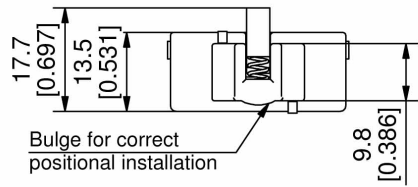
Material:

- ▶ **Housing and handle:** zinc die, matt chrome plated
- ▶ **Spring for insert:** spring steel
- ▶ **Snap wedges:** sintered steel, zinc plated
- ▶ **Hook:** sintered steel, zinc plated

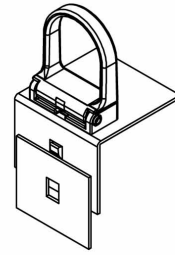


Pull latch handle

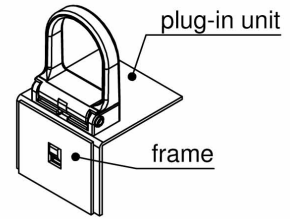
Part Number	Installation type	Clamping range
480-9002.00-00810	tool-less	0,8 - 1,0 mm
480-9002.00-01113	tool-less	1,1 - 1,3 mm
480-9002.00-01416	tool-less	1,4 - 1,6 mm



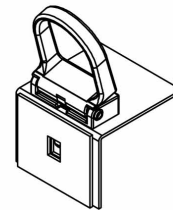
Operation



pushing in



locked



unlocked