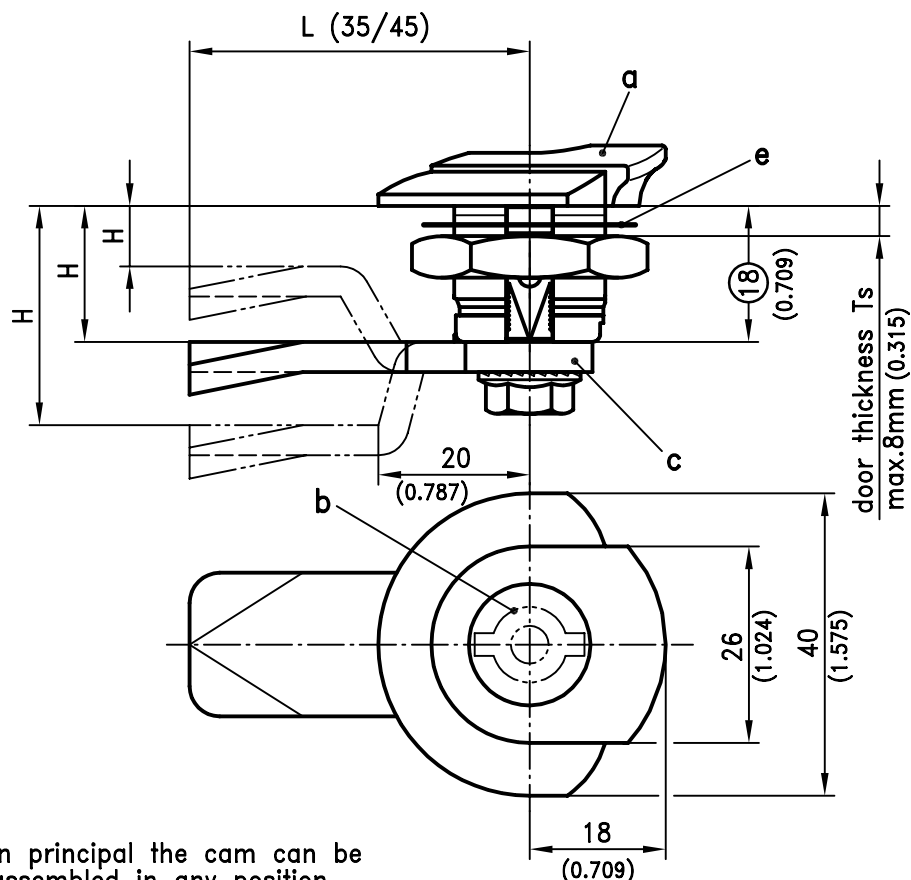
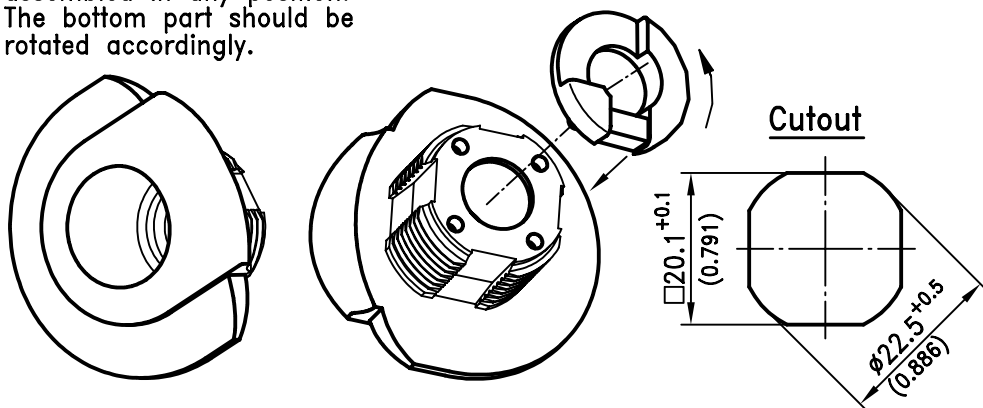


# 1-107 Quarter-Turn Pr20.1 L18

## Softline



In principal the cam can be assembled in any position. The bottom part should be rotated accordingly.



Quarter-Turn SOFTLINE with 90° rotation and integrated finger pull.

- RH or LH application by rotating the bottom part.
- The Quarter-Turn consists of three basic components a, b and c, which can be combined to suit your application.
- On request parts can be assembled by DIRAK.
- A pre-assembled Quarter-Turn can be installed in the cutout.

### Material:

- a)
- **Housing:** PA, black
  - **Bottom part:** zinc die, zinc plated
- b)
- **Inserts:** zinc die, chrome plated or black coated or PA, black with zinc die core
- c)
- **Cams:** steel, zinc plated

a) Housing with bottom part and	nut	nut and grounding/earthing clip
	100-9007	100-9008
b) Insert (no star- or wing knob)	see product system 1-100 / 1-095	
c) Cam	see product system 1-100 / 1-095 / 1-260 / 1-262 / 1-264	

### Optional:

Water- and dust-tight according to IP65 by:

d) O-Ring	200-1001
e) Flat external seal	200-0901
e1) For IP66/67 use additional O-Ring	200-1002

f) Assembling	RH version (as drawn)	LH version
without O-Ring	200-0066	200-0068
with O-Ring	200-0067	200-0069

12/15/08

© copyright by DIRAK / Germany

