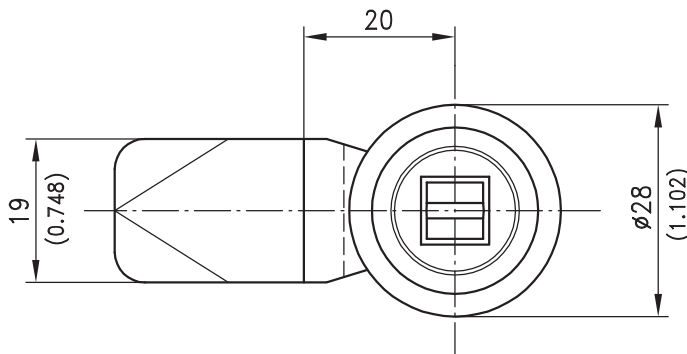
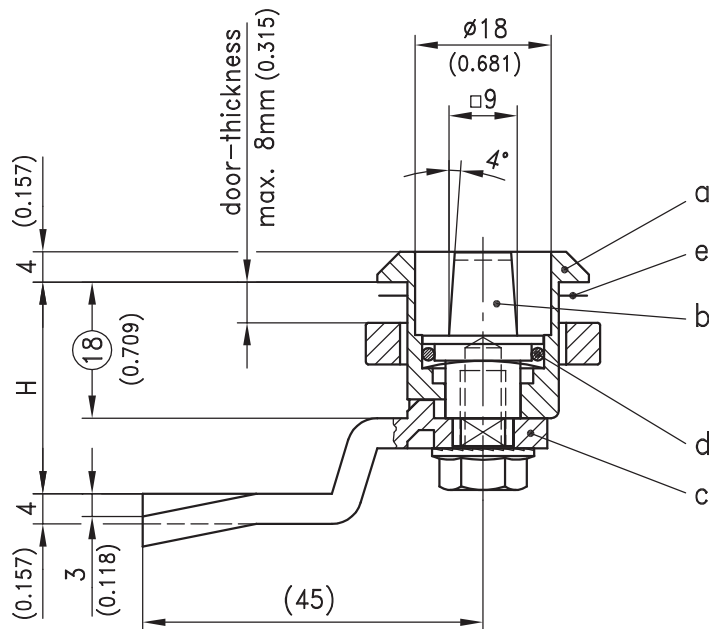


# 1-210 Quarter-Turn Pr20.1 L18 with conical insert



Railway Quarter-Turn with 90° rotation, operated by a so-called "Bern" key.

- RH or LH application.
- This Quarter-Turn consists of three basic parts which can be combined to suit your application.
- On request parts can be assembled by DIRAK.
- A pre-assembled Quarter-Turn can be installed in the cutout.

**Material:**

- a) **Housing:** zinc die, chrome plated or black coated
- b) **Insert:** steel, zinc plated, zinc die, chrome plated
- c) **Cam:** steel, zinc plated

a) Housing with nut	zinc die	zinc die
	chrome plated	black coated
	200-9065	200-9086

Housings with longer bodies and different head diameters on request.

b) Insert steel (zinc plated)	200-9175
b <sub>1</sub> ) Insert zinc die (chrome plated)	200-9138

c) Cam see product system 1-100 or 1-262

**Optional:**

d) O-Ring	200-1001
e) Flat external seal	200-0901

f) Assembling without O-Ring	200-0001
with O-Ring	200-0002

12/15/08

© copyright by DIRAK / Germany

