

2-060SL Pullhandle with Slam-Hook PrC SNAP-LINE

for cutout C, for cylinder, tool-less installation

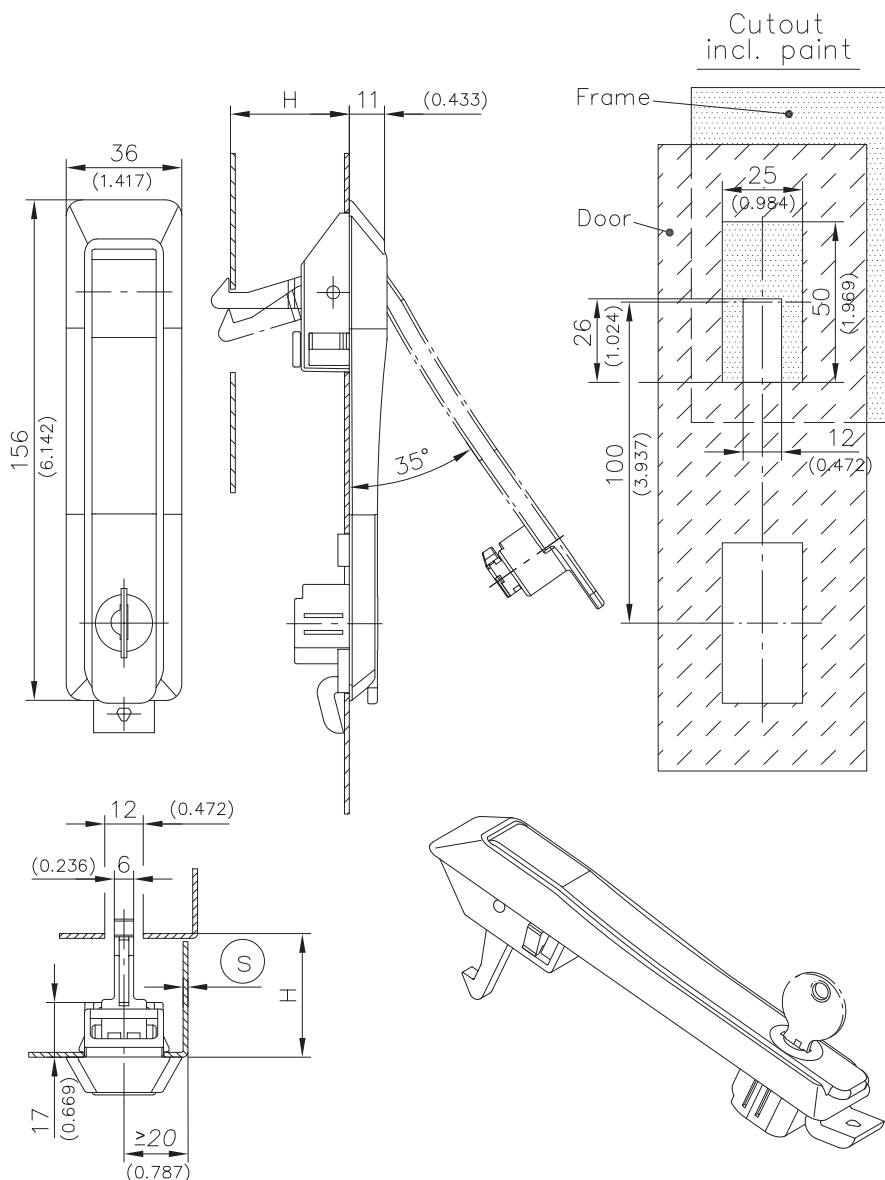


Pullhandle with slam-hook SNAP-LINE.

- Opening operation: unlock handle and pull handle by 35°.
- Closing operation: push handle into the dish, lock the barrel and slam the door closed. (the spring-loaded hook is free-running)
- LH and RH application.
- A non-locked handle has a detent in the door-dish.
- **Installation:** Hook lower part into the lower cutout. Snap top part into the upper cutout with a simple push.

Material:

- **Dish:** PA, black
- **Handle:** zinc die, black
- **Bolt/hook:** zinc die, untreated
- **Snap wedges:** PA
- **Pin:** steel, zinc plated
- **Locking cylinder:** PA



Pullhandle, with slam hook	clamping range ⑤	H	keyed alike 1333	keyed different/mixed	see page
	1.2 - 1.7	37	407-9402.00-37015	407-9401.00-37015	
	1.7 - 2.2	37	407-9402.00-37020	407-9401.00-37020	
Further H- and ⑤-dimensions on request!					
Tool for uninstallation			292-0306.80-02530	292-0306.80-02530	01.113
Tool for uninstallation			292-0301.15-00000	292-0301.15-00000	01.113