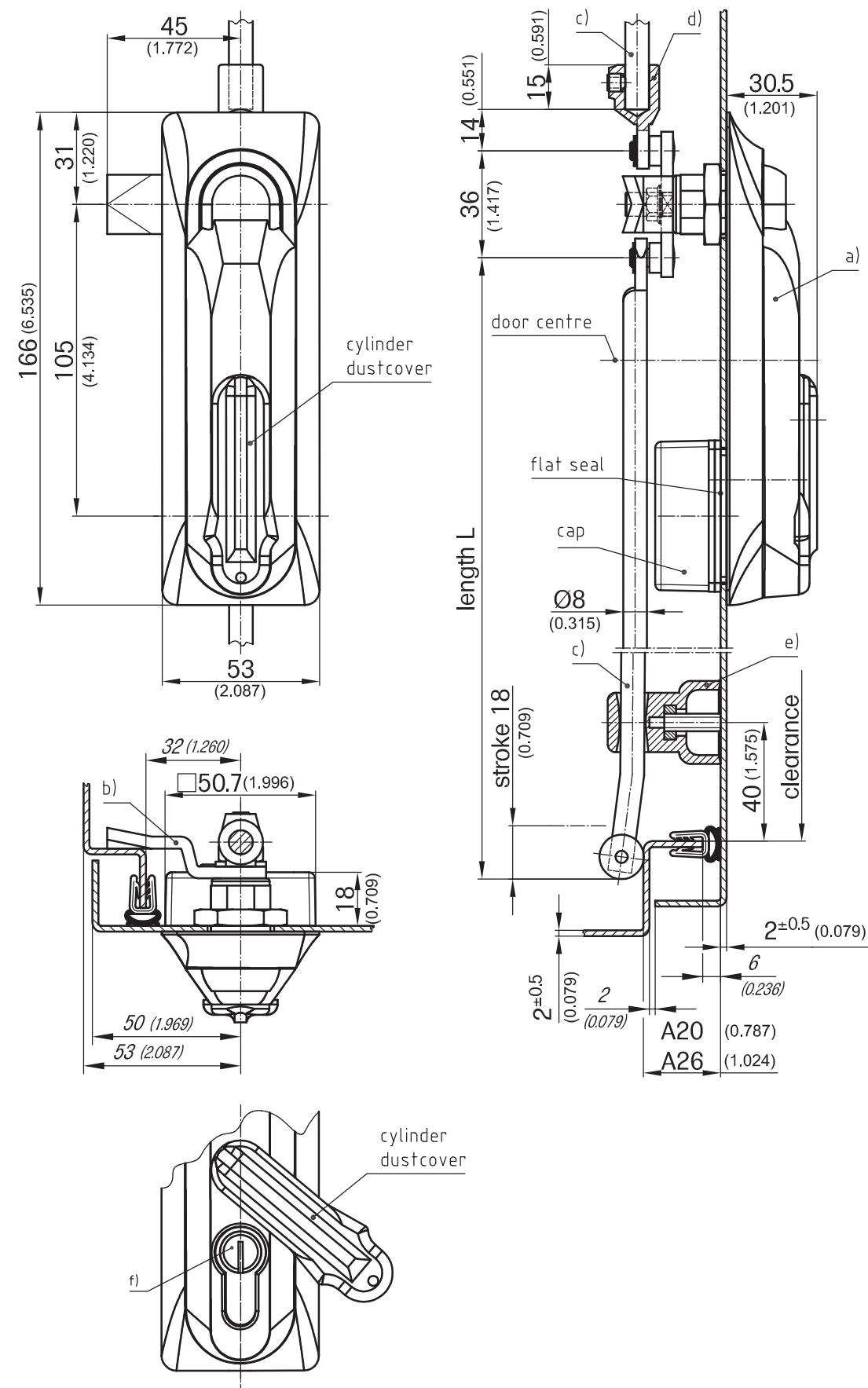


2-102 Swinghandle RS 105

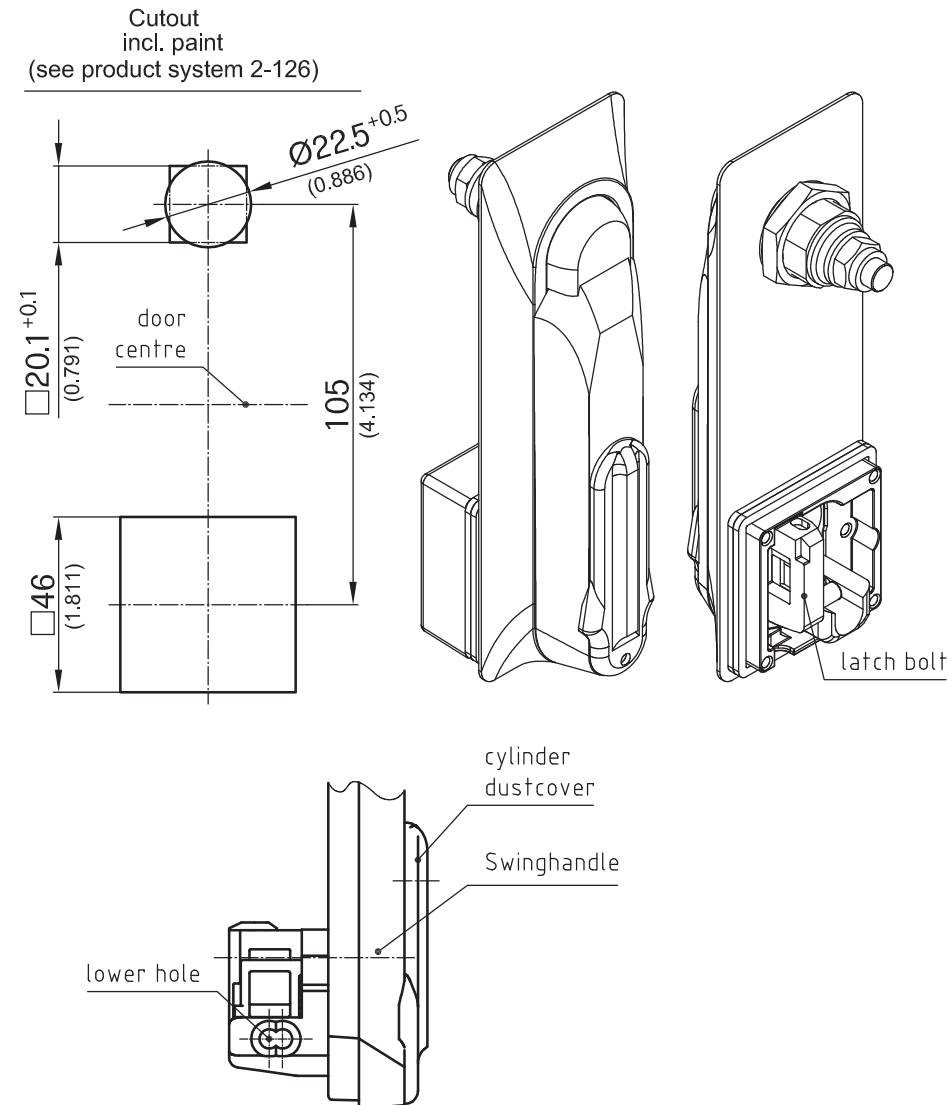
Security Tested



© copyright by DIRAK / Germany

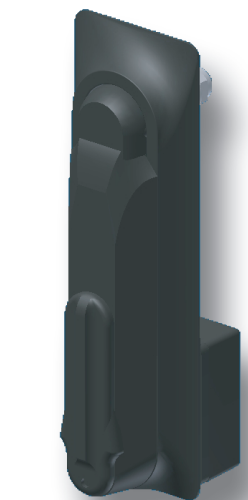
2-102 Swinghandle RS 105

Security Tested



When using 40 (1.575) and 45mm (1.772) long Profile-Cylinders only the lower hole is used for fixing!

			Part No.
a)	Swinghandle 105		207-9129
b)	2/3-point cam see product system	e.g. for bending	A20 207-9522
			A26 207-9528
b ₁)	2-point cam		207-9599
c)	Round rods see product system 1-170 or 1-180		
d)	Adapter for round rods		200-9601
e)	Rod Guides	e.g. for bending	A20 200-3601.03
	(see product system 1-190 and 1-191)		A26 200-3602.03
f)	Profile Cylinder according to DIN 18252 see product system 2-140		



Low profile Swinghandle, zinc die „105“, for Profile Cylinder and round rods. For sheet-metal and plastic enclosures. The Swinghandle has a 90° rotation.

- RH and LH application.
- The Swinghandle is latched by a springloaded bolt, and in addition has a hardened steel anti cutting plate in the handle. Both protect against vandalism/tampering.
- Complies with security test to DIN 1630 WK II.
- Bolt is controlled by a Euro Cylinder to DIN 18254 (40 or 45mm).
- Water- and dust-tight according to IP65 DIN 60529.
- The Swinghandle can be provided with an electrical System. Please contact DIRAK.

Material:

- a)
- **Swinghandle, fastener, dish, dust cover and cap:** ZL 0430 EN 1774, black
- Other surfaces on request!
- **Latch bolt:** AISI 316
 - **Shaft:** steel, GEOMET 1000
 - **Washer, nut and screw:** steel, zinc plated
 - **Flat seals:** NBR/ Fiber
- b) and b₁)
- **3-and 2-point cams:** steel, zinc plated
- c)
- **Round Rods :** steel, zinc plated
- d)
- **Adapter:** zinc die
- e)
- **Rod Guide:** PA, black

12/15/08
© copyright by DIRAK / Germany

