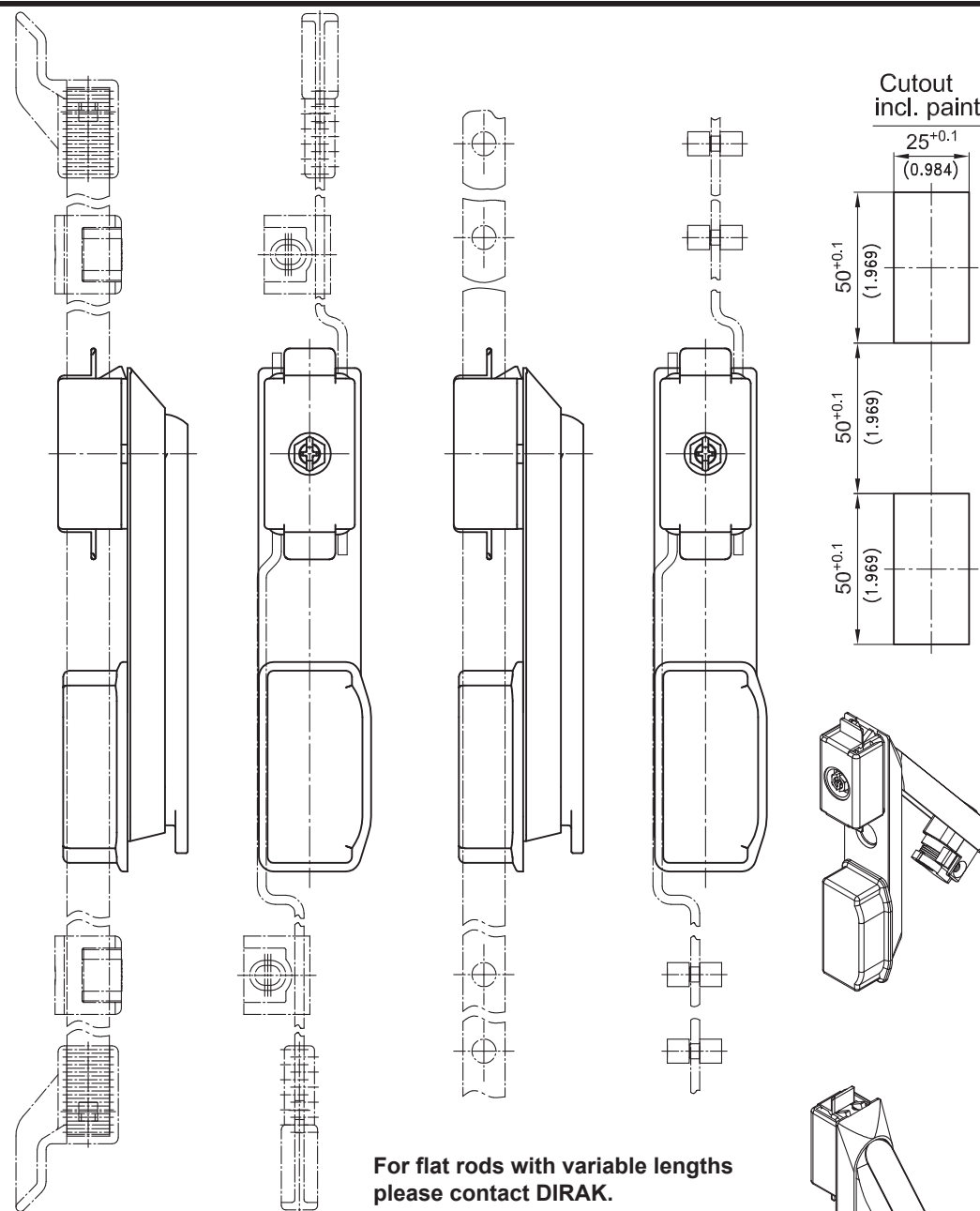


## 3-150SL Swinghandle FS PrC SNAP-LINE



Swinghandle for Profile Cylinder/ dish with Hook and Cap			
for Profile Cylinder 40mm long	clamping range (S)	with dustcover	without dustcover
	1.3 - 2.0	407-9502.00-00015	407-9501.00-00015
	1.5 - 2.2	407-9502.00-00018	407-9501.00-00018
	1.8 - 2.5	407-9502.00-00020	407-9501.00-00020

Sealings according to IP65 EN60529 are included.

Swinghandle for Profile Cylinder/ dish with Hook without Cap (not IP65)			
for Profile Cylinder 40mm long	clamping range (S)	with dustcover	without dustcover
	1.3 - 2.0	407-9503.00-00015	407-9504.00-00015
	1.5 - 2.2	407-9503.00-00018	407-9504.00-00018
	1.8 - 2.5	407-9503.00-00020	407-9504.00-00020

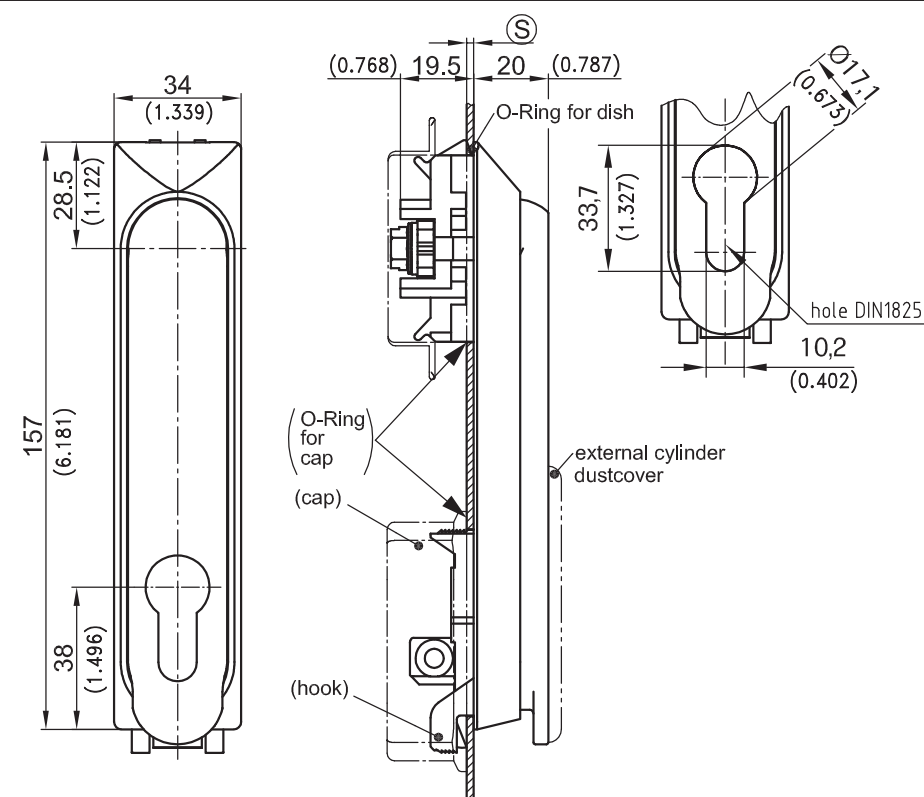
Profile Cylinders according DIN18252 please see product system 2-140.

Other (S) - dimensions on request!

Further variants see product system 3-150 on request.  
Please contact Dirak.

© copyright by DIRAK / Germany

## 3-150SL Swinghandle FS PrC SNAP-LINE



**D-SNAP**  
technology

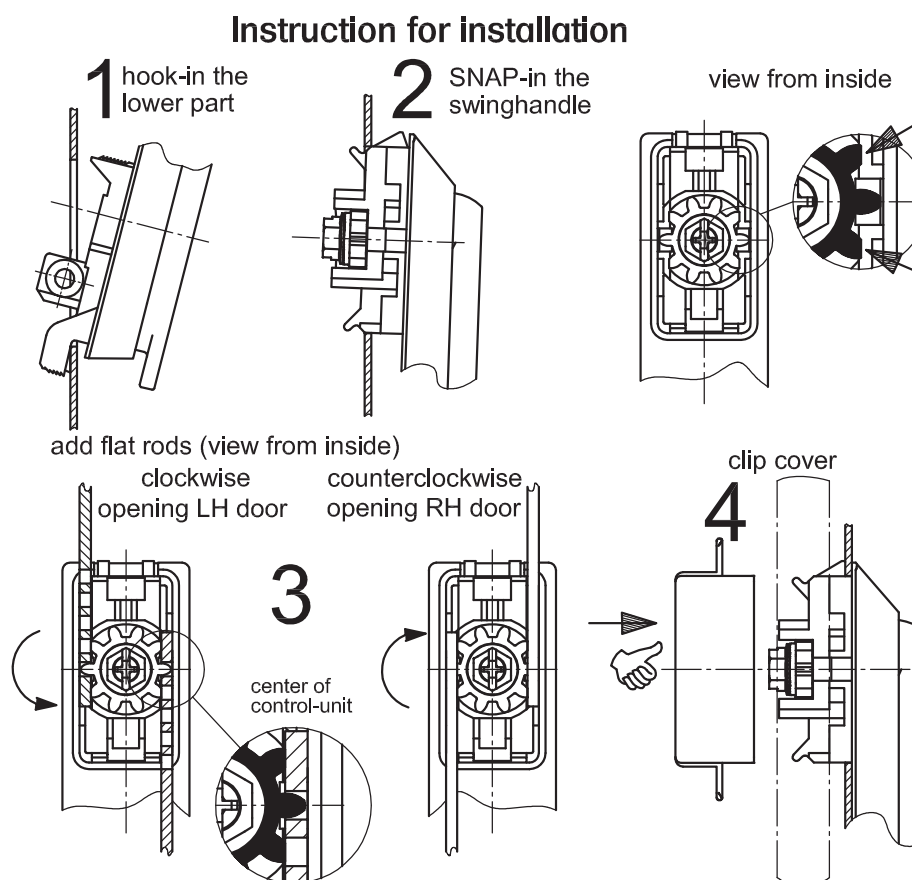


Swinghandle for Profile Cylinder to DIN18252.

- For application within the sealed area installation with internal caps and O-Ring for IP65 EN60529.
- Sealings according to IP65 EN60529 are included.
- Hook the pre-assembled Swing-Handle into the lower cutout and snap into the upper cutout.
- The flat rods are placed into shown position and secured by the clip-on PA cover. For flat rods with variable lengths please contact DIRAK.
- The Swing-Handle is symmetric and can be applied both for LH and RH doors.

**Material:**

- **Swinghandle and dish:** PA, black
- **Snap wedges:** sintered steel
- **Spring:** spring steel
- **Pinion:** sintered steel
- **Screw:** steel, zinc plated



12/15/08

© copyright by DIRAK / Germany

