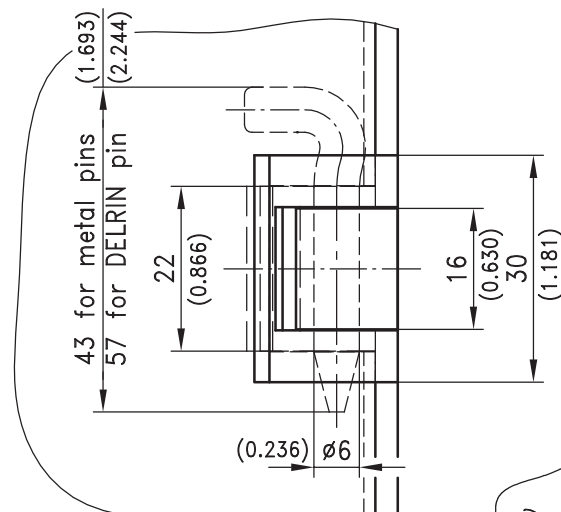
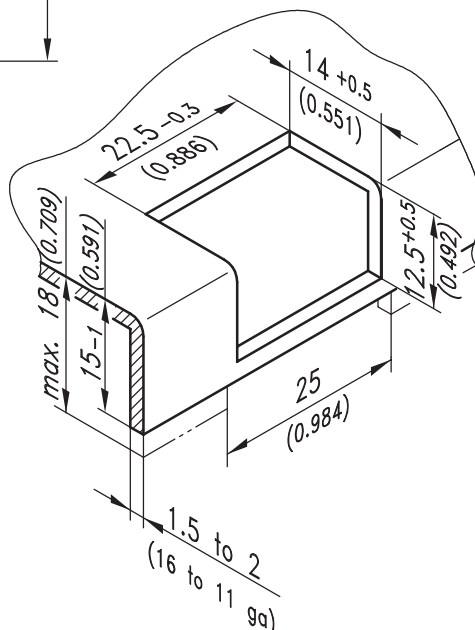


4-152 Hinge Pr05 180°

Single cabinets, Door bending 20mm for surface mounted door

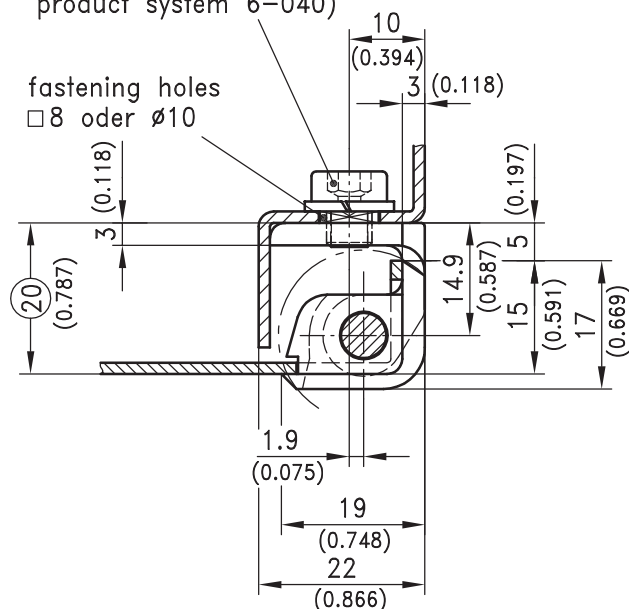


Cutout

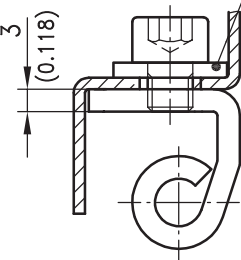


screw M6x6
(e.g. 202-0606 see
product system 6-040)

fastening holes
□8 oder ø10



fastening washer for
□8 oder ø10



180° hinge for surface
mounted doors.

- RH or LH application.
- The frame part in the zinc die version has two M6 threaded square stubs for fixing from inside.
- **Frame part made of steel for heavy applications!**
- Closed cutout.

Material:

- **Frame Part:** zinc die, chrome plated, black coated or steel, black coated
- **Fastening Washer:** steel, zinc plated
- **Door Part:** zinc die, chrome plated or black coated
- **Pin:** steel, stainless steel or DELRIN

Hinge with	Frame part zinc die chrome plated	Frame part zinc die black coated	Frame part steel black coated
Pin, steel (zinc plated)	212-9056	212-9059	212-9062
Pin, stainless steel	212-9057	212-9060	212-9063
Pin, DELRIN (natur color)	212-9058	212-9061	212-9064

Fastening washer for steel frame part is included.
Stainless steel version see product system 7-132.

12/16/08

© copyright by DIRAK / Germany

