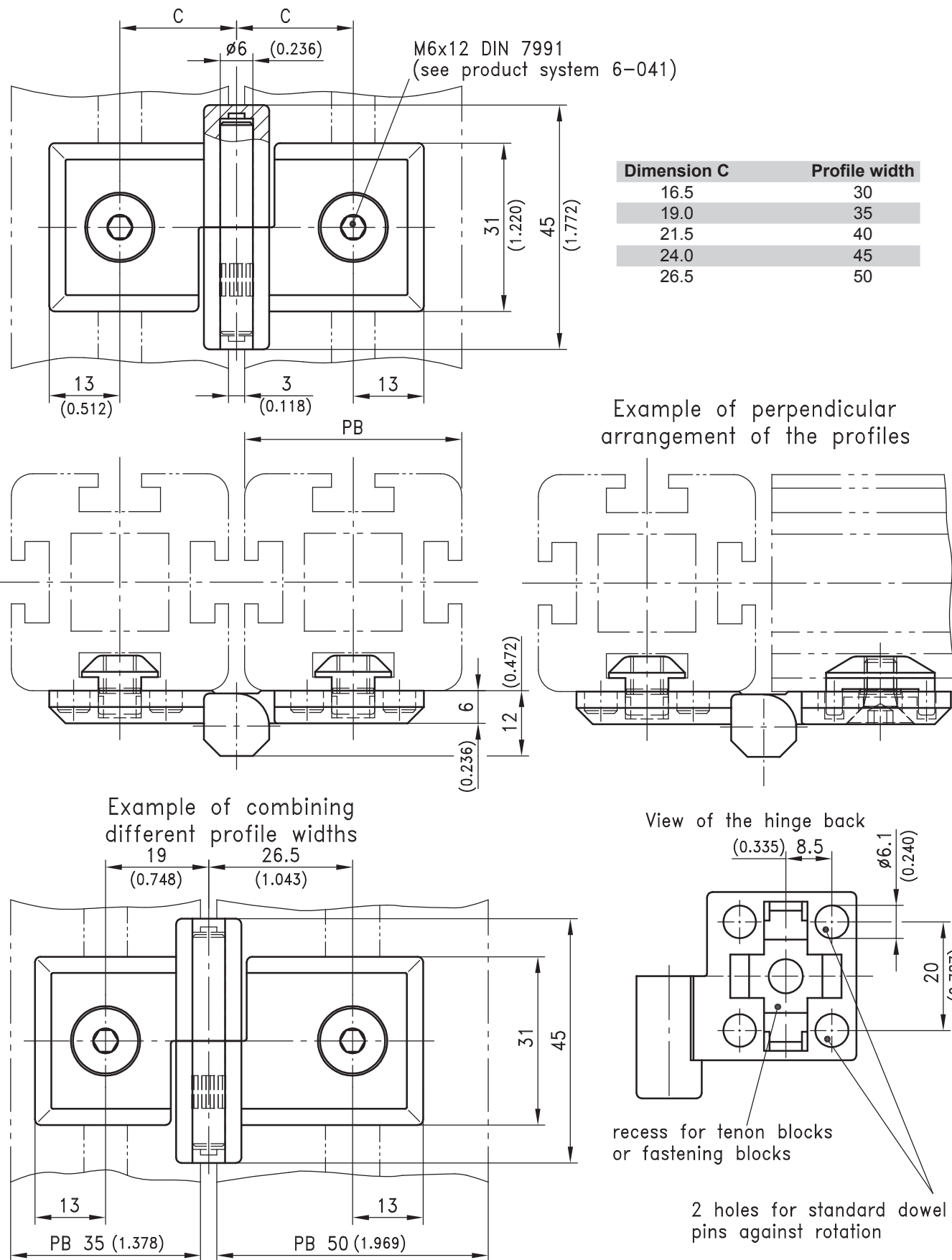


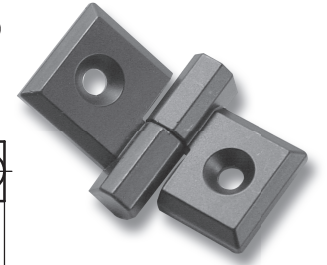
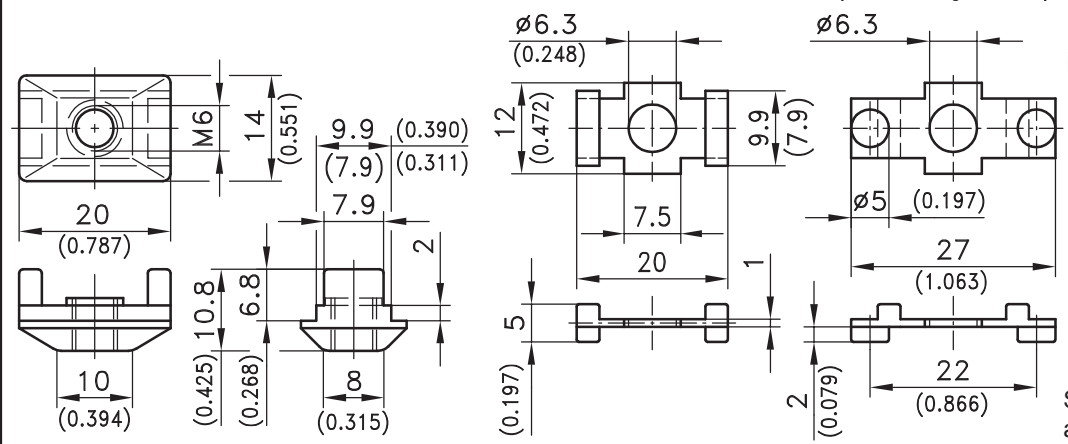
4-247 Hinge Pr01 180°
for nested door



4-247 Hinge Pr01 180°
for nested door

Tenon blocks
for positioning and fastening

Fastening/Positioning blocks
for application
with non DIRAK tenon blocks
on flat surfaces
(without grooves)



Tenon blocks		Fastening / Positioning blocks	
groove width in profile	Part No.	for application with non DIRAK tenon blocks	
8mm	265-1001	groove width 8mm	265-1101
10mm	265-1002	groove width 10mm	265-1102
Fastening screws see product system 6-041 or to DIN 7991.		for application on flat surfaces (without grooves)	265-1103

Version		Part numbers for profile width PB				
surface	door version	30	35	40	45	50
chrome plated	RH	265-9001	265-9101	265-9201	265-9301	265-9401
	LH	265-9003	265-9103	265-9203	265-9303	265-9403
black coated	RH	265-9002	265-9102	265-9202	265-9302	265-9402
	LH	265-9004	265-9104	265-9204	265-9304	265-9404

		Version RH			
		chrome plated		black coated	
PB	Dimension C	hinge part a)	hinge part with pin / b)	hinge part a)	hinge part with pin / b)
30	16.5	265-0101.01	265-8703	265-0101.02	265-8704
35	19.0	265-0201.01	265-8707	265-0201.02	265-8708
40	21.5	265-0301.01	265-8711	265-0301.02	265-8712
45	24.0	265-0401.01	265-8715	265-0401.02	265-8716
50	26.5	265-0501.01	265-8719	265-0501.02	265-8720

		Version LH			
		chrome plated		black coated	
PB	Dimension C	hinge part a ₁)	hinge part with pin / b ₁)	hinge part a ₁)	hinge part with pin / b ₁)
30	16.5	265-0102.01	265-8701	265-0102.02	265-8702
35	19.0	265-0202.01	265-8705	265-0202.02	265-8706
40	21.5	265-0302.01	265-8709	265-0302.02	265-8710
45	24.0	265-0402.01	265-8713	265-0402.02	265-8714
50	26.5	265-0502.01	265-8717	265-0502.02	265-8718

- Screw-on Hinges for aluminum profiles, lift-off.
- These hinges allow the linking of different profile widths.
 - Parallel and perpendicular mounting of profiles is possible.
 - The DIRAK tenon blocks fit into the recess at the back of the hinges and combine positioning, fastening and anti-rotation features.
 - For application with non DIRAK tenon blocks or on flat surfaces (e.g. sheet metal, glass), the corresponding fastening blocks are available with a safety device preventing rotation.

- Material:**
- **Hinge housing:** zinc die, chrome plated or black coated
 - **Pin:** stainless steel
 - **Tenon blocks and fastening blocks:** zinc die, untreated

