



## 4-249.03SL Hinge Pr01 SNAP-LINE 180°

for nested door, tool-less installation

### Benefits:

- ▶ Small elegant hinge.
- ▶ 180° Opening angle.
- ▶ Installation by a simple push into the cutout.
- ▶ To guarantee a correct positional installation, the cutouts can have indentation.

### Material:

- ▶ **Hinge parts:** zinc die, matt chrome plated or black
- ▶ **Pin:** stainless steel
- ▶ **Snap wedges:** sintered steel, zinc plated



## Hinge, zinc die, black

Part Number	Pin version	Clamping range (S)	Material Pin	Installation type
418-9303.33-00008	pressed in	0.6 - 0.9	stainless steel	Tool-less
418-9303.33-00010	pressed in	0.8 - 1.1	stainless steel	Tool-less
418-9303.33-00014	pressed in	1.2 - 1.5	stainless steel	Tool-less
418-9303.33-00020	pressed in	1.8 - 2.1	stainless steel	Tool-less
418-9303.33-00024	pressed in	2.2 - 2.5	stainless steel	Tool-less

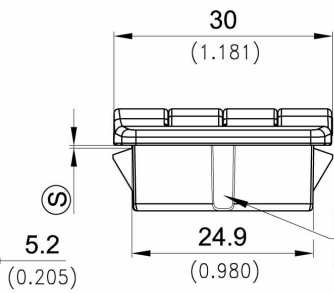
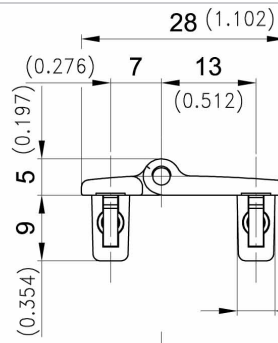
## Hinge, zinc die, chrome plated

Part Number	Pin version	Clamping range (S)	Material Pin	Installation type
418-9303.40-00008	pressed in	0.6 - 0.9	stainless steel	Tool-less
418-9303.40-00010	pressed in	0.8 - 1.1	stainless steel	Tool-less
418-9303.40-00014	pressed in	1.2 - 1.5	stainless steel	Tool-less
418-9303.40-00020	pressed in	1.8 - 2.1	stainless steel	Tool-less
418-9303.40-00024	pressed in	2.2 - 2.5	stainless steel	Tool-less

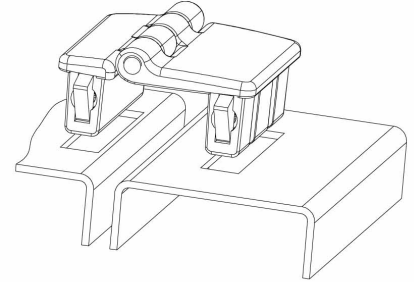
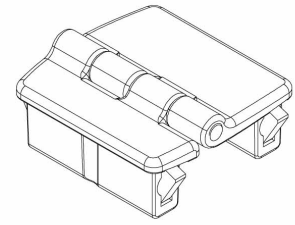
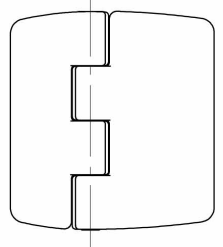
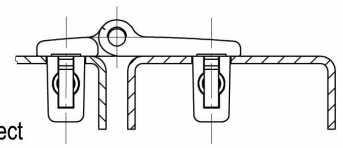
### Complementary Products:

292-0306.80-02530

Tool for uninstallation



**Example of application**



**alternative Cutout with fitting indication incl. paint**

indentation for correct positional installation

