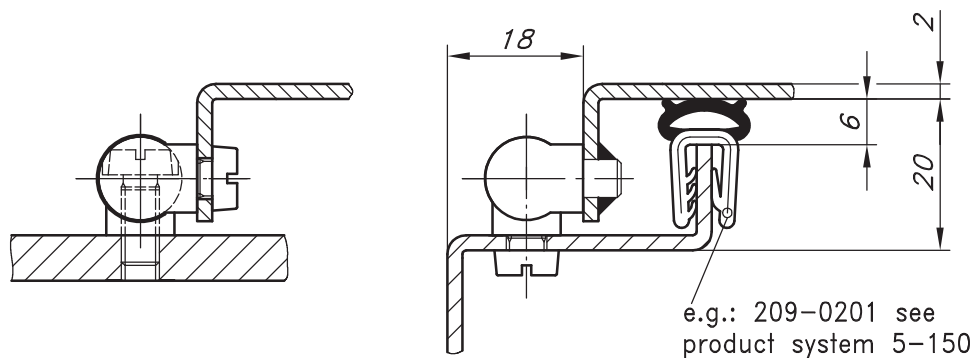
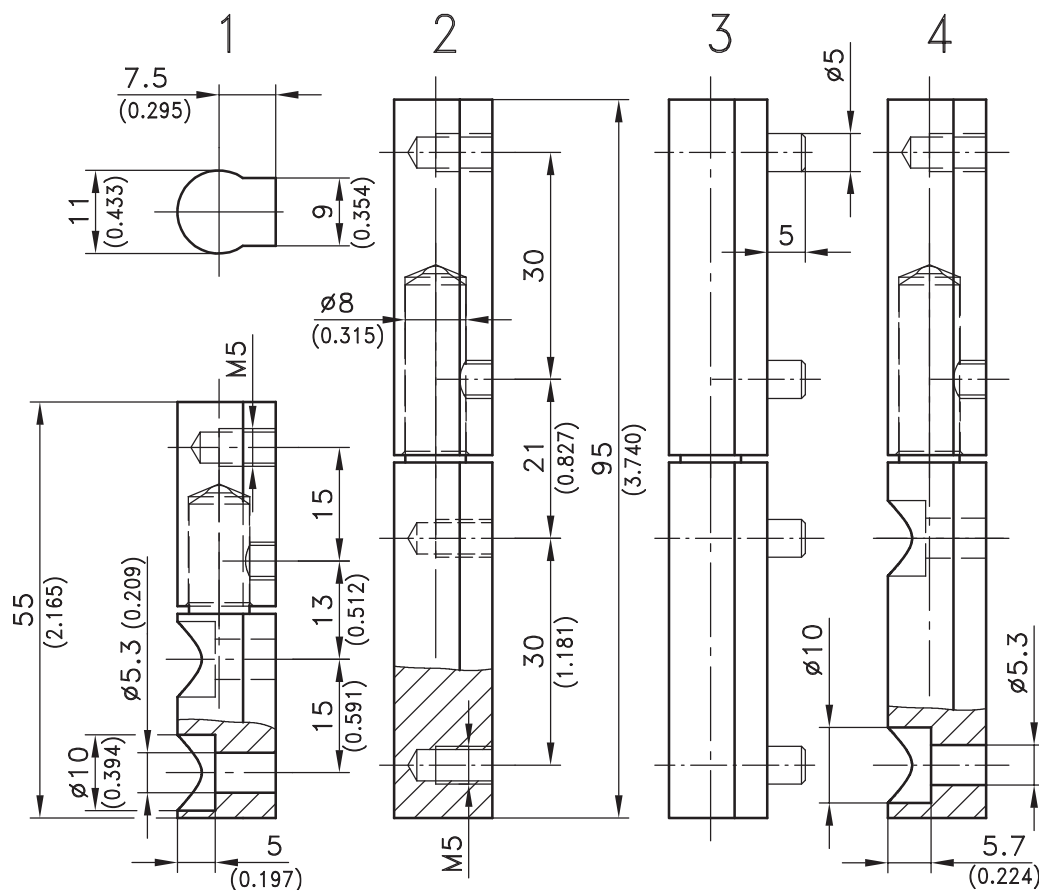


# 4-284 Hinge Pr04 180° for surface mounted door

## Examples of application



## Versions



180° Profile-Hinge, Screw-on or Weld-on.

- We only show the 4 most common versions.
- Many other combinations are possible.
- Please contact DIRAK.
- Opening angle max. 180°.

### Attention:

The covers for version 1 and 4 have extremely sharp edges.

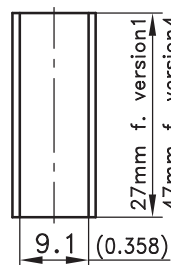
**INJURY RISK!**

### Material:

- **Hinge parts:** steel, zinc plated
- **Covers:** AISI 301

Version	Description	Part No.
1	Length 55/2.165 with M5 thread in female part and holes 5.3/0.209 in male part, supplied with 2 stainless steel hole covers	242-9001
2	Length 95/3.740 threaded M5	242-9101
3	Length 95/3.740 with weld-on stubs	242-9102
4	Length 95/3.740 with M5 thread in female part and holes 5.3/0.209 in male part, supplied with 2 stainless steel hole covers	242-9103

hole cover for versions 1 and 4



12/16/08

© copyright by DIRAK / Germany