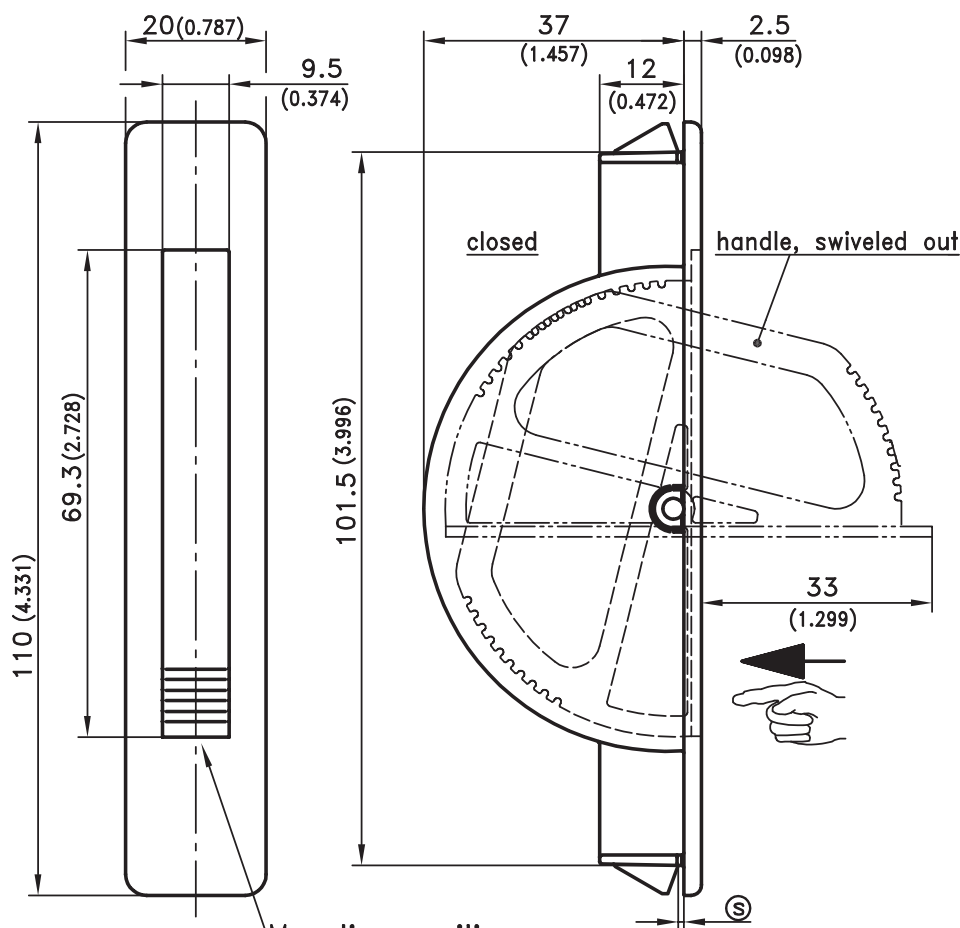
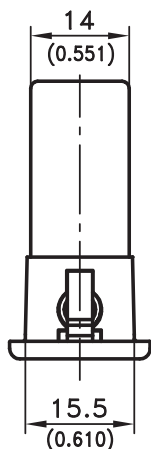


# 6-1330SL Revolving Pull Handle SNAP-LINE

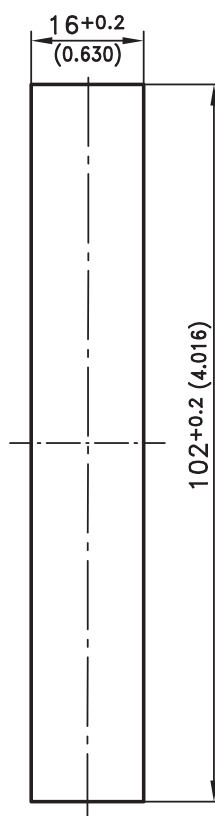


- This Handle is suitable for the computer industry, 19" technology, insertions and equipments and other applications.
- Designed for vertical or horizontal uses.
- The corrugation shows the fitting position.
- A soft push on the fluted position makes the handle revolving into the final, open position.
- A soft push makes the swiveled out handle fall back. For closing to a fully flush surface the end of the handle has to be pushed to the housing.
- Installation by a simple push into appropriate cutout.

Mounting position  
(fluting at the bottom)



## Cutout



## Material:

- **Handle and Dish:** PA, black
- **Pin:** steel, zinc plated
- **Snap wedges:** sintered steel
- **Spring:** spring steel

	clamping range (S)	Part No.
Revolving Handle	0.8 - 1.5	413-9005.00-00015
	1.3 - 2.0	413-9005.00-00020
	2.0 - 2.7	on request
Other (S) - dimensions on request!		

11/12/07

© copyright by DIRAK / Germany

