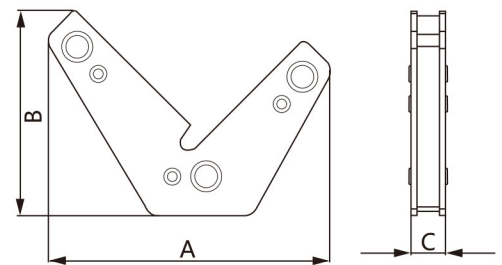


WM3 DUAL-USE WELDING MAGNET

The main uses and characteristics

Application : Ideal for ferrous metal holding for welding jobs in hardware processing and construction industry.

Features : 1. Create 90° corners by holding from the outside, providing you with an unobstructed area for inside tack welds.
2. Use its outer edges to set up materials at 60°.



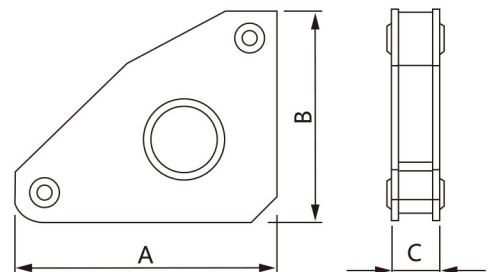
The above products specifications and dimensions are for reference only, shall be subject to the actual product by our company, are subject to change without prior notice

WM4 MULTI-ANGLE WELDING MAGNET

The main uses and characteristics

Application : Ideal for ferrous metal holding for welding jobs in hardware processing and construction industry.

Features : 1. This products has 30°/60° edge as well as the standard 45° and right angle (90°) edge.
2. The center hole makes it easier to handle.
3. There are two small riveted holes for linking magnets together to add extra strength to the job.



The above products specifications and dimensions are for reference only, shall be subject to the actual product by our company, are subject to change without prior notice